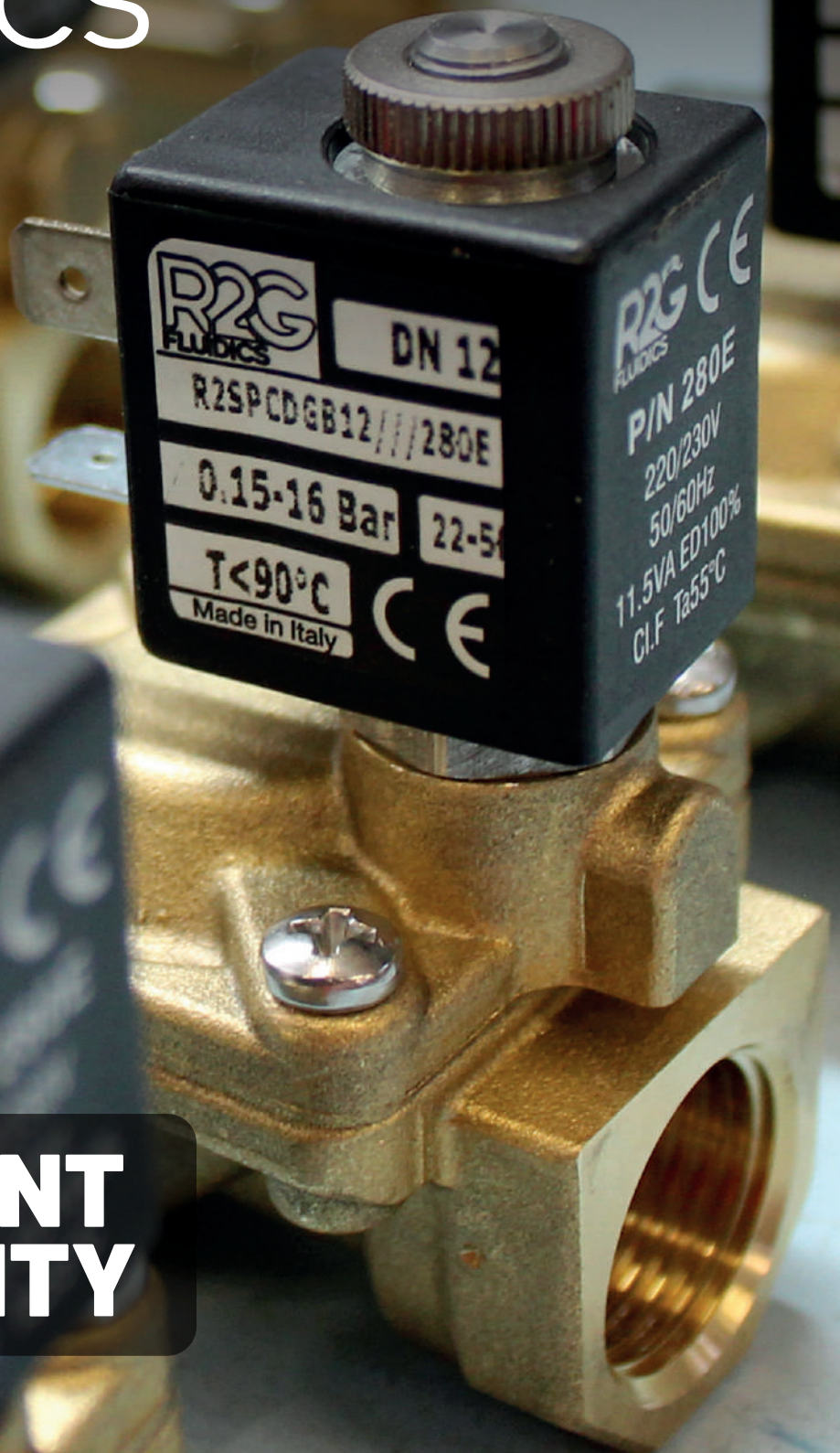


R2G FLUIDICS

CATALOGUE 2023



**DIFFERENT
IN QUALITY**

Sommario

2 WAYS DIRECT ACTING

Serie R2AB Normally close	6
Serie R2AC Normally Close	7
Serie R2AC Normally Close	8
Serie R2XC Normally Close	9
Serie R2IC Normally Closed	10
Serie R2IC Normally Closed	11
Serie R2AB Normally open	12
Serie R2AC Normally Open	13
Serie R2XC Normally Open	14

2 WAYS INDIRECT ACTING

R2SP-R2SR Normally Close	16
Serie R2SP-R2SR Normally Open	17
Serie R2MG Normally Closed	18

2 WAYS COMBINED ACTING

Serie R2MH Normally Closed	20
Serie R2IH Normally Closed	21

3 WAYS DIRECT ACTING

Serie R2ACT Normally Close	24
Serie R2XCT Normally Close	25
Serie R2ICT Normally Closed	26

DIRECTING PILOTS

Serie R2KT Armature tube 10mm Normally Close	28
Serie R2KT Armature tube 13mm Normally Close	29
Serie R2KT Armature tube 10mm Normally Open	30
Serie R2KT Armature tube 13mm Normally Open	31
Serie R2KT Armature tube 13mm Normally Close	32

2 WAYS ANGLE SEAT VALVES

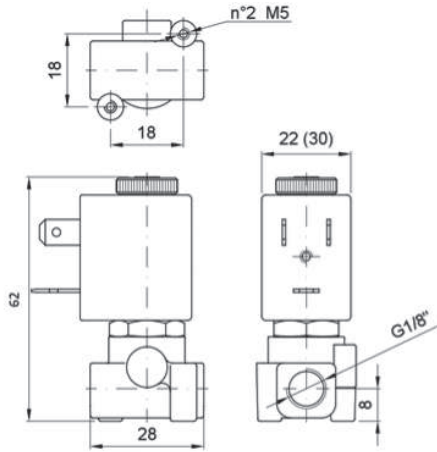
Serie R2SI Air Actuated Angle Seat Valve	34
--	----

2 WAYS ANGLE SEAT VALVES

Serie 2800/2200 - 22mm coil - 10mm Armature Tube	36
Serie 3A00 - 30mm Coil - 10mm Armature Tube	37
Serie 3000 - 30mm Coil - 13mm Armature Tube	38
Serie 3600 - 36mm Coil - 13mm Armature Tube	39
Electrical plug Serie 412 / 413	40
Serie R2SC Automatic Drain System	41

2 Ways Direct Acting





2/2 Serie R2AB Normally close

CODE	Connection G ISO 228	Orifice mm	Kv M ³ /h	Differential Pressure (bar)			Coil		Seal	Temp. Range °C
				Min	Max		Series	Width (mm)		
					AC	DC				
R2ABCAG#12/// Coil	1/8"	1.2	0.045	0	25	25	2800	22	NBR=B	-10 +90
R2ABCAG#15/// Coil		1.5	0.06	0	16	16				
R2ABCAG#20/// Coil		2.0	0.09	0	12	10				
R2ABCAG#25/// Coil		2.5	0.15	0	8	6				
R2ABCAG#30/// Coil		3.0	0.20	0	5	3				
R2ABCAG#40/// Coil	4.0	0.35	0	4	2	3A00	30	EPDM=E	-10 +160	
R2ABCAG#20/// Coil	1/8"	2.0	0.09	0	25					15
R2ABCAG#25/// Coil		2.5	0.15	0	16					8
R2ABCAG#30/// Coil		3.0	0.20	0	8					5
R2ABCAG#40/// Coil		4.0	0.35	0	5					3

: Please select the sealing type required
 Example: R2ABAGB25///2801: ISO G1/8"NBR
 Coil 24V DC 7W

Note: For Industrial Oxygen use application FKM sealing have to be used and Max pressure is limited to 25 bar
 Example: R2ABAGV25/0/2801 G1/8" 2,5mm FKM 24VDC

Coils

SERIE	Coil P/N	Voltage	Nominal Power			Electrical connection	Connectors
			AC VA Inrush	AC VA Holding	DC Watt		
Series 2800 Width 22mm	2801	24 DC	-	-	7	Industrial Standard 22 mm	On Demand
	280B	24 AC	11,5	9	-		
	280D	110 AC	11,5	9	-		
	280E	230 AC	11,5	9	-		
Series 3A00 Width 30mm	3A01	24 DC	-	-	8	DIN 43650A	On Demand
	3A0B	24 AC	11	8,5	-		
	3A0E	230 AC	11	8,5	-		

DESCRIPTION

- Solenoid valve 2 ways, direct acting type.
- Brass body CW617N.
- Switching-On time 15ms.
- Switching-Off time 20ms.

CONSTRUCTION

- Body: Brass CW614N
- Armature tube: Brass CW614N
- Plunger and core: Stainless steel - 430Fr
- Springs: Stainless steel - Aisi 302
- Seal material: NBR - FPM - EPDM

FEATURES

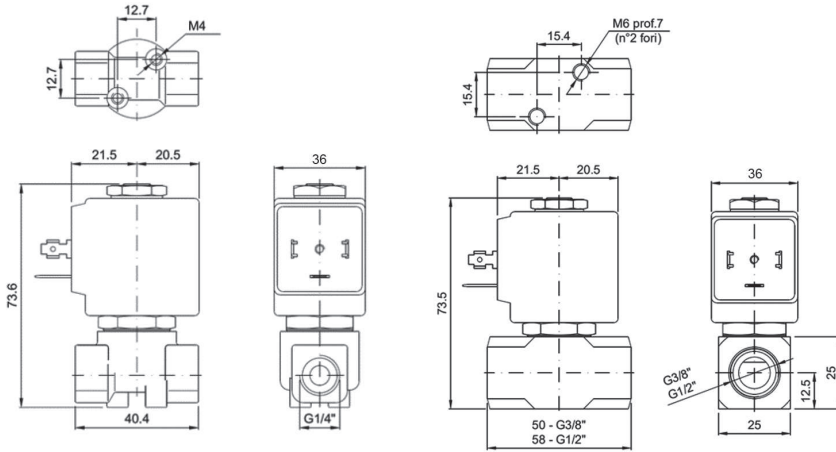
- Maximum allowable pressure: 100bar*
- Maximum fluid viscosity: 27cSt (mm²/s)
- Ambient temperature:
 Class F coil -10°C +55°C
 Class H coil -10°C +80°C
- Above 80°C please consult our tech department for the application fine tuning
- Universal mounting

OPTIONS

- Manual override
- Degreased for Industrial Oxygen use
- Electroless nickel plating
- Others on request

SPARE PARTS

1. Coil fixing nut
2. Coil
3. Mobile plunger assembly
4. Armature tube kit



2/2 Serie R2AC Normally Close

CODE	Connection G ISO 228	Orifice mm	Kv m3/h	Differential Pressure (bar)			Coil		Seal	Temp. Range °C
				Min	Max AC DC		Series	Width (mm)		
R2ACCAG#12/// Coil	1/8"	1.2	0.05	0	100	60	3000	NBR=B	-10 +90	
R2ACCAG#15/// Coil		1.5	0.07	0	30	25				
R2ACCAG#20/// Coil		2	0.1	0	22	20				
R2ACCAG#25/// Coil		2.5	0.15	0	16	15				
R2ACCAG#30/// Coil		3	0.25	0	15	10				
R2ACCAG#35/// Coil		3.5	0.32	0	10	8				
R2ACCBG#12/// Coil	1/4"	1.2	0.05	0	100	60		30	EPDM=E	-10 +160
R2ACCBG#15/// Coil		1.5	0.07	0	30	25				
R2ACCBG#20/// Coil		2	0.1	0	22	20				
R2ACCBG#25/// Coil		2.5	0.15	0	16	15				
R2ACCBG#30/// Coil		3	0.25	0	15	10				
R2ACCBG#35/// Coil		3.5	0.32	0	10	8				
R2ACCBG#45/// Coil	3/8"	4.5	0.41	0	7	4	PTFE=P		-10 +160	
R2ACCBG#52/// Coil		5.2	0.47	0	4	1.8				
R2ACCCG#30/// Coil		3	0.25	0	15	10				
R2ACCCG#35/// Coil		3.5	0.32	0	10	8				
R2ACCCG#40/// Coil		4	0.36	0	8	5				
R2ACCCG#45/// Coil		4.5	0.41	0	6	4				
R2ACCCG#52/// Coil	5.2	0.47	0	4	1.8					
R2ACCDG#30/// Coil	1/2"	3	0.25	0	15	10				
R2ACCDG#35/// Coil		3.5	0.32	0	10	8				
R2ACCDG#40/// Coil		4	0.36	0	8	5				
R2ACCDG#45/// Coil		4.5	0.41	0	6	4				
R2ACCDG#52/// Coil		5.2	0.47	0	4	1.8				

: Please select the sealing type required
Example: R2ACCBG25///300E: ISO G1/4"NBR
Coil 24V DC 10W

REMARK: The maximum allowable pressure PS for steam is 10bar with PTFE seals and 2.5bar with EPDM

Note: For Industrial Oxygen use application use FKM seals and max pressure is limited to 25bar.
Example: R2ACCBGV35//Q/3001 G1/4" 3,5mm FKM 24V DC 10W

DESCRIPTION

- Solenoid valve 2 ways, direct acting type.
- Brass body CW617N.
- Switching-On time 18ms.
- Switching-Off time 23ms.

CONSTRUCTION

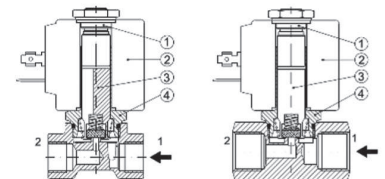
- Body: Brass CW614N
- Armature tube: Stainless steel Aisi 303
- Plunger and core: Stainless steel 430Fr
- Springs: Stainless steel Aisi 302
- Seal material: NBR - FPM - EPDM - PTFE

FEATURES

- Maximum allowable pressure: 100bar*
- Maximum fluid viscosity: 27cSt (mm2/s)
- Ambient temperature:
 - with class F coil -10°C +55°C
 - with class H coil -10°C +80°C
- Above 80°C please consult our tech department for the application fine tuning
- Universal mounting position

OPTIONS

- Manual override
- /R: Stainless steel orifice (up to 4,5mm orifice)
- Degreased for Industrial Oxygen use
- Electroless nickel plating
- Others on request

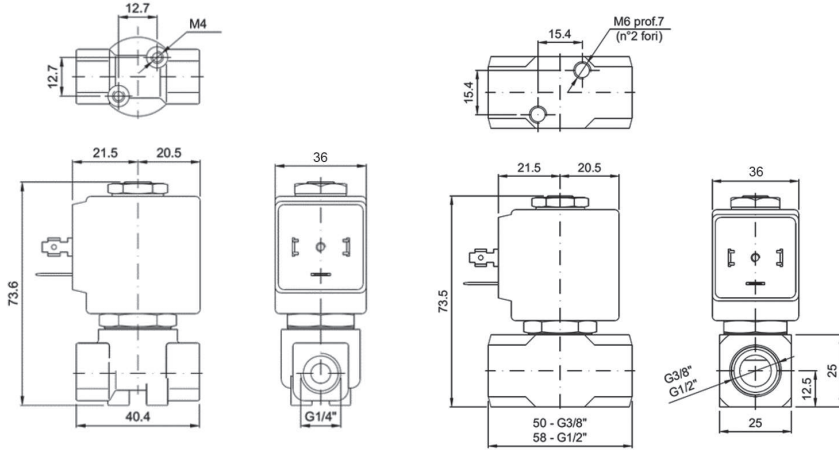


SPARE PARTS

1. Coil fixing nut
2. Coil
3. Mobile plunger assembly
4. Armature tube kit

Coils

SERIE	Coil P/N	Voltage	Nominal Power			Electrical connection	Connectors
			AC VA Inrush	AC VA Holding	DC Watt		
Series 3000 Width 30mm	3001	24DC	-	-	10	DIN 43650A	On Demand
	300B	24 AC	15	12	-		
	300E	230 AC	15	12	-		



2/2 Serie R2AC Normally Close

CODE	Connection G ISO 228	Orifice mm	Kv m3/h	Differential Pressure (bar)		Coil		Seal	Temp. Range °C
				Min	Max	Series	Width (mm)		
R2ACCAG#12/// Coil	1/8"	1.2	0.05	0	100	3600	36	NBR=B	-10 +90
R2ACCAG#15/// Coil		1.5	0.07	0	80				
R2ACCAG#20/// Coil		2	0.1	0	50				
R2ACCAG#25/// Coil		2.5	0.15	0	35				
R2ACCAG#35/// Coil		3.5	0.32	0	20				
R2ACCBG#12/// Coil	1/4"	1.2	0.05	0	100				
R2ACCBG#15/// Coil		1.5	0.07	0	80				
R2ACCBG#20/// Coil		2	0.1	0	50				
R2ACCBG#25/// Coil		2.5	0.15	0	35				
R2ACCBG#35/// Coil		3.5	0.32	0	20				
R2ACCBG#45/// Coil	3/8"	4.5	0.41	0	14				
R2ACCBG#52/// Coil		5.2	0.47	0	10				
R2ACCCG#30/// Coil		3	0.25	0	25				
R2ACCCG#35/// Coil		3.5	0.32	0	19				
R2ACCCG#40/// Coil		4	0.36	0	15				
R2ACCCG#45/// Coil	1/2"	4.5	0.41	0	14				
R2ACCCG#52/// Coil		5.2	0.47	0	10				
R2ACCDG#30/// Coil		3	0.25	0	25				
R2ACCDG#35/// Coil		3.5	0.32	0	19				
R2ACCDG#40/// Coil		4	0.36	0	15				
R2ACCDG#45/// Coil	1/2"	4.5	0.41	0	14				
R2ACCDG#52/// Coil		5.2	0.47	0	10				
R2ACCDG#64/// Coil		6.4	0.64	0	5				

: Please select the sealing type required
Example: R2ACCBG25//3601: ISO G1/4"NBR
Coil 24V DC 27W

REMARK: The maximum allowable pressure PS for steam is 10bar with PTFE seals and 2.5bar with EPDM

Note: For Industrial Oxygen use application use FKM seals and max pressure is limited to 25bar.
Example: R2ACCBGV35//3601 G1/4" 3,5mm FKM 24V DC 27W

Coils

SERIE	Coil P/N	Voltage	Nominal Power			Electrical connection	Connectors
			AC VA Inrush	AC VA Holding	DC Watt		
Series 3600 Width 36mm	3601	24DC	-	-	24	DIN 43650A	On Demand
	360B	24 AC	30	24	-		
	360E	230 AC	30	24	-		

DESCRIPTION

- Solenoid valve 2 ways, direct acting type.
- Brass body CW617N.
- Switching-On time 18ms.
- Switching-Off time 23ms.

CONSTRUCTION

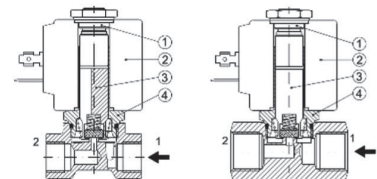
- Body: Brass CW614N
- Armature tube: Stainless steel Aisi 303
- Plunger and core: Stainless steel 430Fr
- Springs: Stainless steel Aisi 302
- Seal material: NBR - FPM - EPDM - PTFE

FEATURES

- Maximum allowable pressure: 100bar*
- Maximum fluid viscosity: 27cSt (mm2/s)
- Ambient temperature:
with class F coil -10°C +55°C
with class H coil -10°C +80°C
- Above 80°C please consult our tech department for the application fine tuning
- Universal mounting position

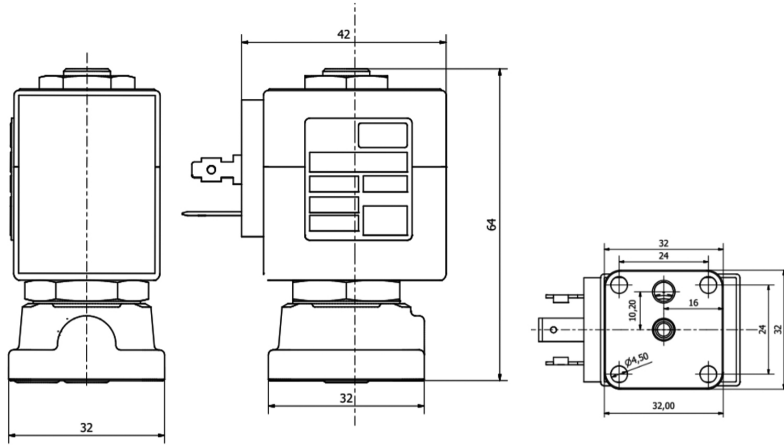
OPTIONS

- Manual override
- /R: Stainless steel orifice (up to 4,5mm orifice)
- Degreased for Industrial Oxygen use
- Electroless nickel plating
- Others on request



SPARE PARTS

1. Coil fixing nut
2. Coil
3. Mobile plunger assembly
4. Armature tube kit



2/2 Serie R2XC Normally Close

CODE	Connection G ISO 228	Orifice mm	Kv m3/h	Differential Pressure (bar)			Coil		Seal	Temp. Range °C
				Min	Max AC DC		Series	Width (mm)		
R2XCCXG#12/// Coil	Sub Base	1.2	0.05	0	100	100	3000	30	NBR=B	-10 +90
R2XCCXG#15/// Coil		1.5	0.07	0	30	25			EPDM=E	-10 +160
R2XCCXG#20/// Coil		2	0.1	0	22	20			FPM=V	-10 +160
R2XCCXG#25/// Coil		2.5	0.15	0	16	15			PTFE	-40 +180

: Please select the sealing type required
Example: R2XCCXG#15///3001: ISO G3/4"NBR
Coil 24V DC 10W

REMARK: The maximum allowable pressure PS for steam is 6bar with PTFE seals and 2.5bar with EPDM

Note: For Industrial Oxygen use application use FKM seals and max pressure is limited to 25bar.
Example: R2XCCXGV35//Q/3001 G1/4" 3,5mm FKM 24V DC 10W

Coils

SERIE	Coil P/N	Voltage	Nominal Power			Electrical connection	Connectors
			AC VA Inrush	AC VA Holding	DC Watt		
Series 3000 Width 30mm	3001	24DC	-	-	10	DIN 43650A	On Demand
	300B	24 AC	15	12	-		
	300E	230 AC	15	12	-		

DESCRIPTION

- Solenoid valve 2 ways, direct acting type.
- Brass body CW617N.
- Switching-On time 18ms.
- Switching-Off time 23ms.

CONSTRUCTION

- Body: Brass CW614N
- Armature tube: Stainless steel Aisi 303
- Plunger and core: Stainless steel 430Fr
- Springs: Stainless steel Aisi 302
- Seal material: NBR - FPM - EPDM - PTFE

FEATURES

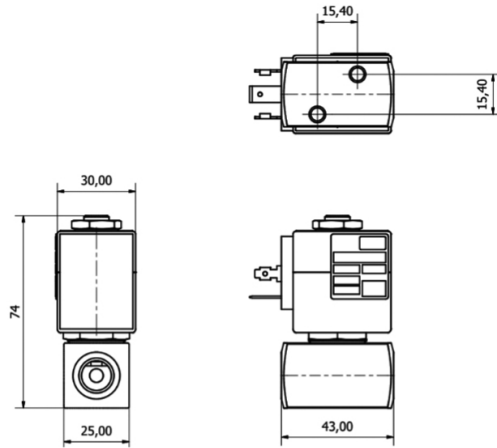
- Maximum allowable pressure: 100bar*
- Maximum fluid viscosity: 27cSt (mm2/s)
- Ambient temperature:
 - with class F coil -10°C +55°C
 - with class H coil -10°C +80°C
- Above 80°C please consult our tech department for the application fine tuning
- Universal mounting position

OPTIONS

- Manual override
- Electroless nickel plating
- Others on request

SPARE PARTS

1. Coil fixing nut
2. Coil
3. Mobile plunger assembly
4. Armature tube kit



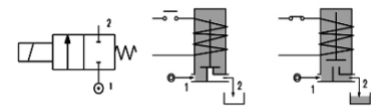
Serie R2IC Normally Closed

CODE	Connection G ISO 228	Orifice mm	Kv m3/h	Differential Pressure (bar)			Coil		Seal	Temp. Range °C
				Min	Max AC	Max DC	Series	Width (mm)		
R2ICCBG#15/// Coil	1/4"	1.5	0.07	0	30	26	3000	30	NBR=B	-10 +90
R2ICCBG#20/// Coil		2	0.1	0	22	20				
R2ICCBG#25/// Coil		2.5	0.15	0	16	14				
R2ICCBG#35/// Coil		3.5	0.32	0	10	8				
R2ICCBG#45/// Coil		4.5	0.41	0	6.5	4				
R2ICCBG#52/// Coil		5.2	0.47	0	4	1.8				
R2ICCCG#30/// Coil	3/8"	3	0.25	0	15	10	3000	30	EPDM=E	-10 +160
R2ICCCG#35/// Coil		3.5	0.32	0	10	8				
R2ICCCG#40/// Coil		4	0.36	0	8	5				
R2ICCCG#45/// Coil		4.5	0.41	0	6.5	4				
R2ICCCG#52/// Coil	5.2	0.47	0	4	1.8	3000	30	FPM=V	-10 +160	
R2ICCDG#30/// Coil	1/2"	3	0.25	0	15					10
R2ICCDG#35/// Coil		3.5	0.32	0	10					8
R2ICCDG#40/// Coil		4	0.36	0	8					5
R2ICCDG#45/// Coil		4.5	0.41	0	6.5					4
R2ICCDG#52/// Coil	5.2	0.47	0	4	1.8					3000

: Please select the sealing type required
Example: R2ICCBGB25///3001: ISO G1/4" NBR
Coil 24V DC 10W

REMARK: The maximum allowable pressure PS for steam is 6bar with PTFE seals and 2,5bar with EPDM

Note: For Industrial Oxygen use application use FKM seals and max pressure is limited to 25bar.
Example: R2ICCBGV35//3001 G1/4" 3,5mm FKM
24V DC 10W



DESCRIPTION

- Solenoid valve 2 ways, direct acting type.
- Stainless Steel AISI 303.
- Switching-On time 18ms.
- Switching-Off time 23ms.

CONSTRUCTION

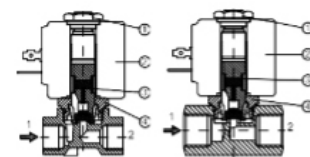
- Body: Stainless Steel AISI 303
- Armature tube: Stainless steel Aisi 303
- Plunger and core: Stainless steel 430Fr
- Springs: Stainless steel Aisi 302
- Seal material: NBR - FPM - EPDM - PTFE

FEATURES

- Maximum allowable pressure: 100bar*
- Maximum fluid viscosity: 27cSt (mm2/s)
- Ambient temperature:
with class F coil -10°C +55°C
with class H coil -10°C +80°C
- Above 80°C please consult our tech department for the application fine tuning
- Universal mounting position

OPTIONS

- Manual override
- Degreased for Industrial Oxygen use
- /B: Back pressure resistant (for more details ask our tech. dept.)
- Others on request

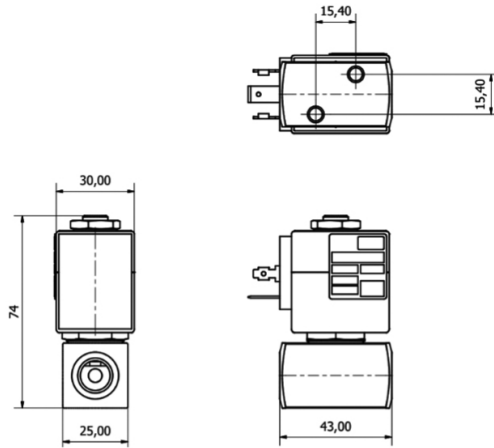


SPARE PARTS

1. Coil fixing nut
2. Coil
3. Mobile plunger assembly
4. Armature tube kit

Coils

SERIE	Product Serie	Voltage	Nominal Power			Electrical connection	Connectors
			AC VA Inrush	AC VA Holding	DC Watt		
Series 3000 Width 30mm	3001	24DC	-	-	10	DIN 43650A	On Demand
	300B	24 AC	15	12	-		
	300E	230 AC	15	12	-		



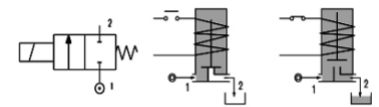
Serie R2IC Normally Closed

CODE	Connection G ISO 228	Orifice mm	Kv m3/h	Differential Pressure (bar)			Coil		Seal	Temp. Range °C
				Min	AC	DC	Series	Width (mm)		
R2ICCBG#15/// Bob.	1/4"	1.5	0.07	0	80	80	3600	36	NBR=B	-10 +90
R2ICCBG#20/// Bob.		2	0.1	0	50	40				
R2ICCBG#25/// Bob.		2.5	0.15	0	35	32				
R2ICCBG#35/// Bob.		3.5	0.32	0	20	19				
R2ICCBG#45/// Bob.		4.5	0.41	0	14	13				
R2ICCBG#52/// Bob.		5.2	0.47	0	10	9			EPDM=E	-10 +160
R2ICCCG#30/// Bob.	3/8"	3	0.25	0	25	24	3600	36	FPM=V	-10 +160
R2ICCCG#35/// Bob.		3.5	0.32	0	20	19				
R2ICCCG#45/// Bob.		4.5	0.41	0	14	13				
R2ICCCG#52/// Bob.		5.2	0.47	0	10	9				
R2ICCDG#30/// Bob.	1/2"	3	0.25	0	25	24	3600	36	PTFE = P	-40 +180
R2ICCDG#35/// Bob.		3.5	0.32	0	20	19				
R2ICCDG#45/// Bob.		4.5	0.41	0	14	13				
R2ICCDG#52/// Bob.		5.2	0.47	0	10	9				

: Please select the sealing type required
Example: R2ICCBG25//3601: ISO G1/4"NBR
Coil 24V DC 24W

REMARK: The maximum allowable pressure PS for steam is 6bar with PTFE seals and 2,5bar with EPDM

Note: For Industrial Oxygen use application use FKM seals and max pressure is limited to 25bar.
Example: R2ICCBG35/0/3601 G1/4" 3,5mm FKM 24V DC 24W



DESCRIPTION

- Solenoid valve 2 ways, direct acting type.
- Stainless Steel AISI 303.
- Switching-On time 18ms.
- Switching-Off time 23ms.

CONSTRUCTION

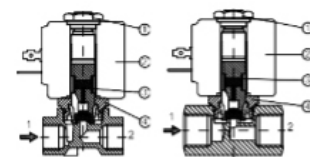
- Body: Stainless Steel AISI 303
- Armature tube: Stainless steel Aisi 303
- Plunger and core: Stainless steel 430Fr
- Springs: Stainless steel Aisi 302
- Seal material: NBR - FPM - EPDM - PTFE

FEATURES

- Maximum allowable pressure: 100bar*
- Maximum fluid viscosity: 27cSt (mm2/s)
- Ambient temperature:
 - with class F coil -10°C +55°C
 - with class H coil -10°C +80°C
- Above 80°C please consult our tech department for the application fine tuning
- Universal mounting position

OPTIONS

- Manual override
- Degreased for Industrial Oxygen use
- /B: Back pressure resistant (for more details ask our tech. dept.)
- Others on request

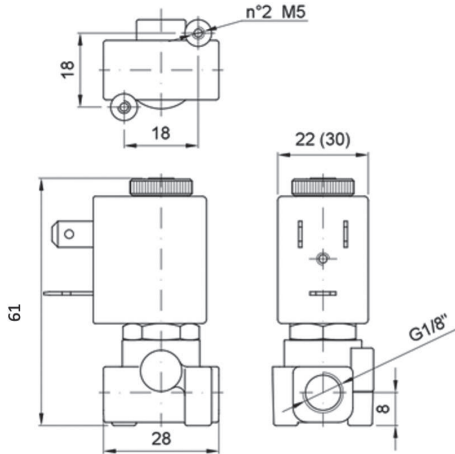


SPARE PARTS

1. Coil fixing nut
2. Coil
3. Mobile plunger assembly
4. Armature tube kit

Coils

SERIE	Product Serie	Voltage	Nominal Power			Electrical connection	Connectors
			AC VA Inrush	AC VA Holding	DC Watt		
Series 3600 Width 36mm	3601	24DC	-	-	24	DIN 43650A	On Demand
	360B	24 AC	30	24	-		
	360E	230 AC	30	24	-		



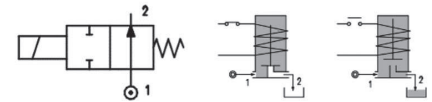
2/2 Serie R2AB Normally open

CODE	Connection G ISO 228	Orifice mm	Kv M3/h	Differential Pressure (bar)			Coil		Seal	Temp. Range °C
				Min	Max AC DC		Series	Width (mm)		
R2ABAAG#12/// Coil	1/8"	1.2	0.04	0	18	18	2200	22	NBR=B	-10 +90
R2ABAAG#15/// Coil		1.5	0.06	0	14	14				
R2ABAAG#20/// Coil		2.0	0.09	0	8	8				
R2ABAAG#25/// Coil		2.5	0.15	0	4	4				
R2ABAAG#30/// Coil		3.0	0.20	0	2.5	2.5			FPM=V	-10 +160

: Please select the sealing type required
 Example: R2ABAAGB25///2801: ISO G1/8"NBR
 Coil 24V DC 7W

Coils

SERIE	Coil P/N	Voltage	Nominal Power			Electrical connection	Connectors
			AC VA Inrush	AC VA Holding	DC Watt		
Series 2800 Width 22mm	2801	24 DC	-	-	7	Industrial Standard 22 mm	On Demand
	280B	24 AC	11,5	9	-		
	280D	110 AC	11,5	9	-		
	280E	230 AC	11,5	9	-		



DESCRIPTION

- Solenoid valve 2 ways, direct acting type.
- Brass body CW617N.
- Switching-On time 25ms.
- Switching-Off time 10ms.

CONSTRUCTION

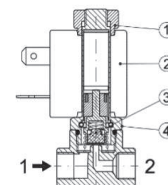
- Body: Brass CW617N
- Armature tube: Brass CW614N
- Plunger and core: Stainless steel - 430Fr
- Springs: Stainless steel - Aisi 302
- Seal material: NBR - FPM - EPDM

FEATURES

- Maximum allowable pressure: 45bar*
- Maximum fluid viscosity: 25cSt (mm2/s)
- Ambient temperature:
 Class F coil -10°C +55°C
 Class H coil -10°C +80°C
- Above 80°C please consult our tech department for the application fine tuning
- Universal mounting

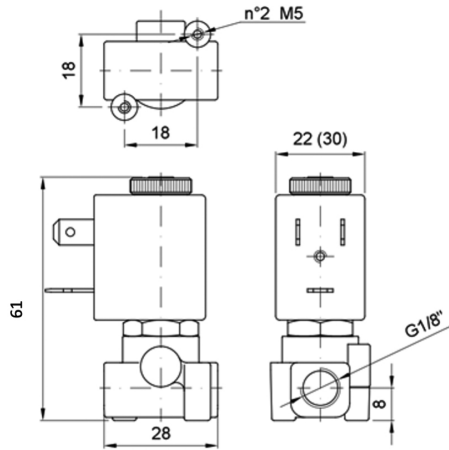
OPTIONS

- Electroless nickel plating
- Others on request



SPARE PARTS

1. Coil fixing nut
2. Coil
3. Mobile plunger assembly
4. Armature tube kit



2/2 Serie R2AC Normally Open

CODE	Connection 6 ISO 228	Orifice mm	Kv m3/h	Differential Pressure (bar)			Coil		Seal	Temp. Range °C
				Min	Max AC DC		Series	Width (mm)		
R2ACAAG#15/// Coil	1/8"	1.5	0.07	0	24	24	3000	30	NBR=B	-10 +90
R2ACAAG#20/// Coil		2	0.1	0	18	18				
R2ACAAG#25/// Coil		2.5	0.15	0	12	12				
R2ACAAG#30/// Coil		3.0	0.25	0	9	9				
R2ACAAG#35/// Coil		3.5	0.32	0	7	7				
R2ACABG#15/// Coil	1/4"	1.5	0.07	0	24	24	3000	30	EPDM=E	-10 +160
R2ACABG#20/// Coil		2	0.1	0	18	18				
R2ACABG#25/// Coil		2.5	0.15	0	12	12				
R2ACABG#30/// Coil		3.0	0.25	0	9	9				
R2ACABG#35/// Coil		3.5	0.32	0	7	7				
R2ACABG#45/// Coil	3/8"	4.5	0.41	0	5	5	3000	30	FPM=V	-10 +160
R2ACABG#52/// Coil		5.2	0.47	0	4	4				
R2ACACG#30/// Coil		3	0.25	0	9	9				
R2ACACG#35/// Coil	1/2"	3.5	0.32	0	7	7	3000	30	FPM=V	-10 +160
R2ACACG#45/// Coil		4.5	0.41	0	5	5				
R2ACADG#30/// Coil		3	0.25	0	9	9				
R2ACADG#35/// Coil	1/2"	3.5	0.32	0	7	7	3000	30	FPM=V	-10 +160
R2ACADG#45/// Coil		4.5	0.41	0	5	5				
R2ACADG#52/// Coil		5.2	0.47	0	4	4				

: Please select the sealing type required

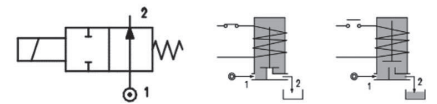
Example: R2ACABG25///3001: ISO G1/4"NBR

Coil 24V DC 10W

*REMARK: The maximum allowable pressure PS for steam is 6bar with PTFE seals and 2,5bar with EPDM seals

Coils

SERIE	Coil P/N	Voltage	Nominal Power			Electrical connection	Connectors
			AC VA Inrush	AC VA Holding	DC Watt		
Series 3000 Width 30mm	3001	24DC	-	-	10	DIN 43650A	On Demand
	300B	24 AC	15	12	-		
	300D	110 AC	15	12	-		
	300E	230 AC	15	12	-		



DESCRIPTION

- Solenoid valve 2 ways, direct acting type.
- Brass body CW617N.
- Switching-On time 25ms.
- Switching-Off time 10ms.

CONSTRUCTION

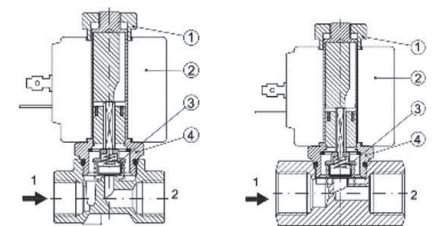
- Body: Brass CW614N
- Armature tube: Stainless steel Aisi 303
- Plunger and core: Stainless steel 430Fr
- Springs: Stainless steel Aisi 302
- Seal material: NBR - FPM - EPDM

FEATURES

- Maximum allowable pressure: 100bar*
- Maximum fluid viscosity: 27cSt (mm2/s)
- Ambient temperature:
 - with class F coil -10°C +55°C
 - with class H coil -10°C +80°C
- Above 80°C please consult our tech department for the application fine tuning
- Universal mounting position

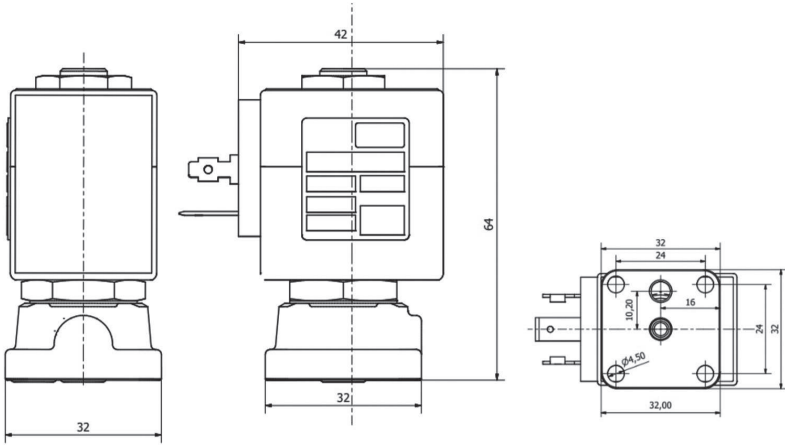
OPTIONS

- Electroless nickel plating
- Others on request



SPARE PARTS

1. Coil fixing nut
2. Coil
3. Mobile plunger assembly
4. Armature tube kit



2/2 Serie R2XC Normally Open

CODE	Connection G ISO 228	Orifice mm	Kv m³/h	Differential Pressure (bar)			Coil		Seal	Temp. Range °C
				Min	Max		Series	Width (mm)		
					AC	DC				
R2XCAXG#15/// Bob.	A Basetta	1.5	0.07	0	24	24			NBR=B	-10 +90
R2XCAXG#20/// Bob.		2	0.1	0	18	18	3000	30	EPDM=E	-10 +160
R2XCAXG#25/// Coil		2.5	0.15	0	12	12			FPM=V	-10 +160

: Please select the sealing type required

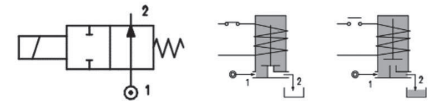
Example: R2XCAXG#25///300E; ISO G¼"NBR

Coil 24V DC 10W

*REMARK: The maximum allowable pressure PS for steam is 6bar with PTFE seals and 2,5bar with EPDM seals

Coils

SERIE	Coil P/N	Voltage	Nominal Power			Electrical connection	Connectors
			AC VA Inrush	AC VA Holding	DC Watt		
Series 3000 Width 30mm	3001	24DC	-	-	10	DIN 43650A	On Demand
	300B	24 AC	15	12	-		
	300E	230 AC	15	12	-		



DESCRIPTION

- Solenoid valve 2 ways, direct acting type.
- Brass body CW617N.
- Switching-On time 25ms.
- Switching-Off time 10ms.

CONSTRUCTION

- Body: Brass CW614N
- Armature tube: Stainless steel Aisi 303
- Plunger and core: Stainless steel 430Fr
- Springs: Stainless steel Aisi 302
- Seal material: NBR - FPM - EPDM

FEATURES

- Maximum allowable pressure: 100bar*
- Maximum fluid viscosity: 27cSt (mm²/s)
- Ambient temperature:
 - with class F coil -10°C +55°C
 - with class H coil -10°C +80°C
- Above 80°C please consult our tech department for the application fine tuning
- Universal mounting position

OPTIONS

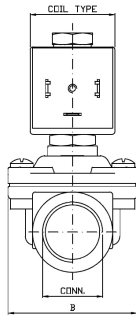
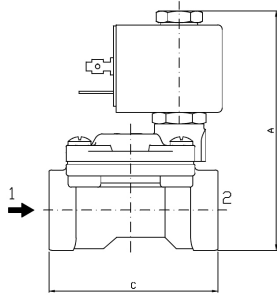
- Electroless nickel plating
- Others on request

SPARE PARTS

1. Coil fixing nut
2. Coil
3. Mobile plunger assembly
4. Armature tube kit

2 Ways Indirect Acting





VALVE TYPE	DIMENSION A	DIMENSION B	DIMENSION C	COIL TYPE	WEIGHT
R2SP G3/8"	83	46	58	SERIE 2800	0,44
R2SP G1/2"	83	46	58	SERIE 2800	0,41
R2SP G3/4"	93	56	78	SERIE 2800	0,70
R2SP G1"	104	74	95	SERIE 2800	1,15
R2SR G 1 1/4"	135	96	130	SERIE 3000	2,4
R2SR G 1 1/2"	135	96	130	SERIE 3000	2,3
R2SR G 2"	151	120	155	SERIE 3000	3,3



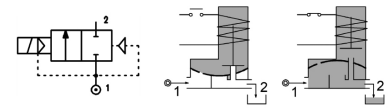
Serie R2SP-R2SR Normally Close

CODE	Connection G ISO 228	Orifice mm	Kv m3/h	Differential Pressure (bar)			Coil		Seal	Temp. Range °C				
				Min	Max AC DC		Series	Width (mm)						
R2SPCCG#12/// Coil	3/8"	13	2.2	0.15	16	16	2800	22	NBR=B	-10 +90				
R2SPCDG#12/// Coil	1/2"	13	2.5	0.15	16	16								
R2SPCEG#18/// Coil	3/4"	19	5.5	0.15	14	14								
R2SPCFG#25/// Coil	1"	25	10.2	0.15	10	10	3000	30	EPDM=E	-10 +160				
R2SRCG#32/// Coil	1" 1/4	32	18	0.15	10	10								
R2SRCHG#40/// Coil	1" 1/2	40	21	0.15	10	10								
R2SRCIG#50/// Coil	2"	50	36	0.15	10	10	3A00	30	FPM=V	-10 +160				
* High pressure range (only NBR sealings)														
R2SPCCG12/// Coil	3/8"	13	2.2	0.5	25	25								
R2SPCDG12/// Coil	1/2"	13	2.2	0.5	25	25								

: Please select the sealing type required
 Example: R2SPCDGB12///2801: ISO G1/2"NBR
 Coil 24V DC 6,5W

Coils

SERIE	Coil P/N	Voltage	Nominal Power			Electrical connection	Connectors
			AC VA Inrush	AC VA Holding	DC Watt		
Series 2800 Width 22mm	2801	24V DC	-	-	6.5	Industrial Standard 22 mm	On Demand
	280B	24V AC	12	8	-		
	280E	230V AC	12	8	-		
Series 3000 Width 30mm	3001	24DC	-	-	10	DIN 43650A	On Demand
	300B	24 AC	20	15	-		
	300E	230 AC	20	15	-		
Series 3A00 Width 30mm	3A01	24V DC	-	-	5		
	3A0B	24V AC	15	11	-		
	3A0E	230V AC	15	11	-		



DESCRIPTION

- Solenoid valve 2 ways, indirect acting type.
- Brass body CW617N.
- Switching-On time 30ms (<1/2"), 50ms (3/4"-1"), 150-1000ms adjustable (>1 1/4")
- Switching-Off time 50ms (<1/2"), 80ms (3/4"-1"), 150-1000ms adjustable (>1 1/4")

CONSTRUCTION

- Body: Brass CW614N
- Armature tube: Stainless steel Aisi 303
- Plunger and core: Stainless steel 430Fr
- Springs: Stainless steel Aisi 302
- Seal material: NBR - FPM - EPDM

FEATURES

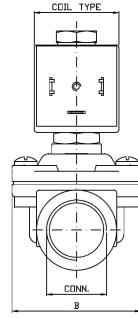
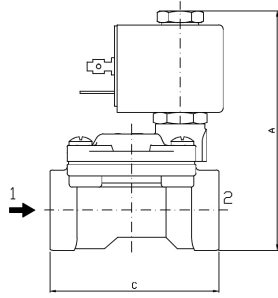
- Maximum allowable pressure: 26bar
- Maximum fluid viscosity: 25cSt (mm2/s)
- Ambient temperature: with class H coil -10°C +80°C
- Above 80°C please consult our tech department for the application fine tuning
- Preferred mounting position with vertical coil above

OPTIONS

- Manual override
- Electroless nickel plating
- /O: Degreased for industrial Oxygen use
- Version for vacuum application (air/gas)
- Others on request

SPARE PARTS

1. Coil fixing nut
2. Coil
3. Mobile plunger assembly
4. Armature tube kit
5. Diaphragm assembly



VALVE TYPE	DIMENSION A	DIMENSION B	DIMENSION C	COIL TYPE	WEIGHT
R2SP G3/8"	83	46	58	SERIE 2800	0,44
R2SP G1/2"	83	46	58	SERIE 2800	0,41
R2SP G3/4"	93	56	78	SERIE 2800	0,70
R2SP G1"	104	74	95	SERIE 2800	1,15
R2SR G 1 1/4"	135	96	130	SERIE 3000	2,4
R2SR G 1 1/2"	135	96	130	SERIE 3000	2,3
R2SR G 2"	151	120	155	SERIE 3000	3,3



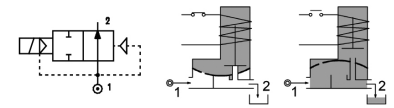
2/2 Serie R2SP-R2SR Normally Open

CODE	Connection G ISO 228	Orifice mm	Kv m3/h	Differential Pressure (bar)			Coil		Seal	Temp. Range °C
				Min	AC	DC	Series	Width (mm)		
R2SPACG#12/// Coil	3/8"	13	2.2	0.15	16	16	2800	22	NBR=B	-10 +90
R2SPADG#12/// Coil	1/2"	13	2.5	0.15	16	16				
R2SPAG#18/// Coil	3/4"	19	5.5	0.15	14	14				
R2SPAFG#25/// Coil	1"	25	10.2	0.15	10	10	3000	30	EPDM=E	-10 +160
R2SRAGG#32/// Coil	1" 1/4	32	18	0.15	10	10				
R2SRAHG#40/// Coil	1" 1/2	40	21	0.15	10	10				
R2SRAIG#50/// Coil	2"	50	36	0.15	10	10			FPM=V	-10 +160

: Please select the sealing type required
Example: R2SPADGB12///2201: ISO G1/2"NBR
Coil 24V DC 7W

Coils

SERIE	Coil P/N	Voltage	Nominal Power			Electrical connection	Connectors
			AC VA Inrush	AC VA Holding	DC Watt		
Series 2800 Width 22mm	2801	24V DC	-	-	7	Industrial Standard 22 mm	On Demand
	280B	24V AC	11,5	9	-		
	280D	110V AC	11,5	9	-		
	280E	230V AC	11,5	9	-		
Series 3000 Width 30mm	3001	24DC	-	-	10	DIN 43650A	On Demand
	300B	24 AC	20	15	-		
	300E	230 AC	20	15	-		
Series 3A00 Width 30mm	3A01	24V DC	-	-	8	DIN 43650A	On Demand
	3A0B	24V AC	11	8,5	-		
	3A0E	230V AC	11	8,5	-		



DESCRIPTION

- Solenoid valve 2 ways, indirect acting type.
- Brass body CW617N.
- Switching-On time 30ms (<1/2"), 50ms (3/4"-1"), 150-1000ms adjustable (>1 1/4")
- Switching-Off time 50ms (<1/2"), 80ms (3/4"-1"), 150-1000ms adjustable (>1 1/4")

CONSTRUCTION

- Body: Brass CW617N
- Armature tube: Brass CW614N
- Plunger and core: Stainless steel 430Fr
- Springs: Stainless steel Aisi 302
- Seal material: NBR - FPM - EPDM

FEATURES

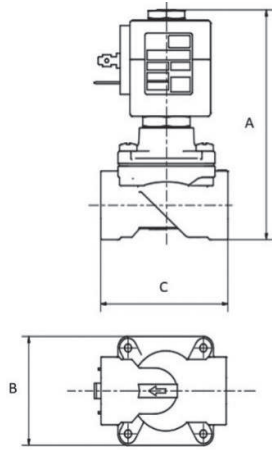
- Maximum allowable pressure: 26bar
- Maximum fluid viscosity: 25cSt (mm2/s)
- Ambient temperature:
with class F coil -10°C +55°C
with class H coil -10°C +80°C
- Above 80°C please consult our tech department for the application fine tuning
- Preferred mounting position with vertical coil above

OPTIONS

- Electroless nickel plating
- Version with slow closing diaphragm
- Version for vacuum application (air/gas)
- Others on request

SPARE PARTS

1. Coil fixing nut
2. Coil
3. Mobile plunger assembly
4. Armature tube kit
5. Diaphragm assembly



VALVE TYPE		DIMENSION A	DIMENSION B	DIMENSION C
R2MH G3/8	DN 13MM	98	46	58
R2MH G1/2	DN 13MM	98	46	58
R2MH G3/4	DN 19MM	109	56	78
R2MH G1	DN 25MM	122	74	95

2/2 Serie R2MG Normally Closed

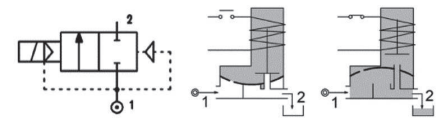
CODE	Connection G ISO 228	Orifice mm	Kv m3/h	Differential Pressure (bar)			Coil		Seal	Temp. Range °C
				Min	Max AC DC		Series	Width (mm)		
R2MGCCG#12///Coil	3/8"	13	2.2	0.15	16	10 (*)	3000	30	NBR=B	-10 +90
R2MGCDG#12///Coil	1/2"	13	2.5	0.15	16	10 (*)			EPDM=E	-10 +160
R2MGCEG#18///Coil	3/4"	19	5.5	0.15	10	5 (*)			FPM=V	-10 +160

: Please select the sealing type required
 Example: R2MGCDGB12///3001: ISO G1/2"NBR
 Coil 24V DC 10W

(*) with coil 3C01

Coils

SERIE	Coil P/N	Voltage	Nominal Power			Electrical connection	Connectors
			AC VA Inrush	AC VA Holding	DC Watt		
Series 3000 Width 30mm	3001	24V DC	-	-	10	DIN 43650A	On Demand
	300B	24V AC	15	12	-		
	300D	110V AC	15	12	-		
	300E	230V AC	15	12	-		



DESCRIPTION

- Solenoid valve 2 ways, indirect acting type.
- Brass body CW617N.
- Switching-On time 30ms (<1/2")
- Switching-Off time 50ms (<1/2")

CONSTRUCTION

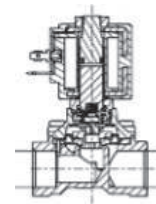
- Body: Brass CW614N
- Armature tube: Stainless steel Aisi 303
- Plunger and core: Stainless steel 430Fr
- Springs: Stainless steel Aisi 302
- Seal material: NBR - FPM - EPDM

FEATURES

- Maximum allowable pressure: 26bar
- Maximum fluid viscosity: 25cSt (mm2/s)
- Ambient temperature:
with class F coil -10°C +55°C
with class H coil -10°C +80°C
- Above 80°C please consult our tech department for the application fine tuning
- Preferred mounting position with vertical coil above

OPTIONS

- Electroless nickel plating
- Version for vacuum application (air/gas)
- Others on request

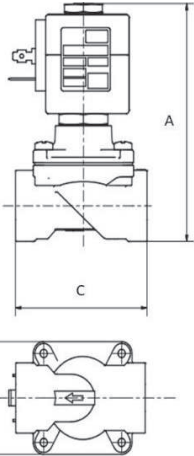


SPARE PARTS

1. Coil fixing nut
2. Coil
3. Mobile plunger assembly
4. Armature tube kit
5. Diaphragm assembly



2 Ways Combined Acting



VALVE TYPE		DIMENSION A	DIMENSION B	DIMENSION C
R2MH G3/8	DN 13MM	98	46	58
R2MH G1/2	DN 13MM	98	46	58
R2MH G3/4	DN 19MM	109	56	78
R2MH G1	DN 25MM	122	74	95



2/2 Serie R2MH Normally Closed

CODE	Connection G ISO 228	Orifice mm	Kv m ³ /h	Differential Pressure (bar)			Coil		Seal	Temp. Range °C
				Min	Max		Series	Width (mm)		
					AC	DC				
R2MHCCG#12///Coil	3/8"	13	2.2	0	10	10(*)	3000	30	NBR=B	-10 +90
					12	12	3600	36		
R2MHCDG#12///Coil	1/2"	13	2.5	0	10	10(*)	3000	30	EPDM=E	-10 +160
					12	12	3600	36		
R2MHCEG#18///Coil	3/4"	19	5.5	0	10	-	3000	30	FPM=V	-10 +160
					12	12	3600	36		
R2MHCFG#25///Coil	1"	25	10.2	0	10	6(**)	3600	36		

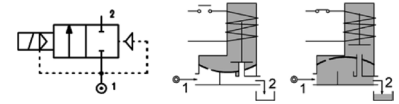
: Please select the sealing type required
 Example: R2MHCDGB12///300E: ISO G1/2" NBR
 Coil 230V AC 15VA

(*) with coil 3C01

(**) In case of use with ED >50% the nominal voltage tolerance to the coil has to be modified in +10% / -0%

Coils

SERIE	Coil P/N	Voltage	Nominal Power			Electrical connection	Connectors
			AC VA Inrush	AC VA Holding	DC Watt		
Series 3000 Width 30mm	3001	24V DC	-	-	10	DIN 43650A	On Demand
	3C01	24VDC	-	-	12		
	300B	24V AC	15	12	-		
	300D	110V AC	15	12	-		
	300E	230V AC	15	12	-		
Series 3600 Width 36mm	3601	24V DC	-	-	24		
	360B	24V AC	30	24	-		
	360D	110V AC	30	24	-		
	360E	230V AC	30	24	-		



DESCRIPTION

- Solenoid valve 2 ways, combined acting type.
- Brass body CW617N.

CONSTRUCTION

- Body: Brass CW614N
- Armature tube: Stainless steel Aisi 303
- Plunger and core: Stainless steel 430Fr
- Springs: Stainless steel Aisi 302
- Seal material: NBR - FPM - EPDM

FEATURES

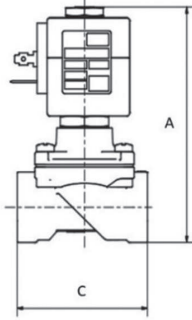
- Maximum allowable pressure: 26bar
- Maximum fluid viscosity: 25cSt (mm²/s)
- Ambient temperature:
with class F coil -10°C +55°C
with class H coil -10°C +80°C
- Above 80°C please consult our tech department for the application fine tuning
- Preferred mounting position with vertical coil above

OPTIONS

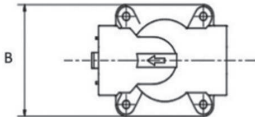
- Electroless nickel plating
- Version for vacuum application (air/gas)
- Others on request

SPARE PARTS

1. Coil fixing nut
2. Coil
3. Mobile plunger assembly
4. Armature tube kit
5. Diaphragm assembly



VALVE TYPE	DIMENSION A	DIMENSION B	DIMENSION C	WEIGHT
R2IH G 3/8"	90	50	66	583
R2IH G 1/2"	90	50	66	583
R2IH G 3/4"	96	50	66	583
R2IH G 1"	103	61	86	810



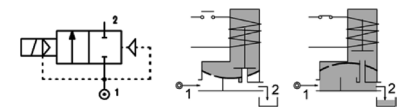
2/2 Serie R2IH Normally Closed

CODE	Connection G ISO 228	Orifice mm	Kv m3/h	Differential Pressure (bar)			Coil		Seal	Temp. Range °C
				Min	Max		Series	Width (mm)		
					AC	DC				
R2IHCCGV12///Coil	3/8"	12	2.2	0	16	6	3000	30	FPM=V	-10 +140
					16	16	3600	36		
R2IHCDGV15///Coil	1/2"	15	2.5	0	10	6	3000	30		
					16	16	3600	36		
R2IHCEGV20///Coil	3/4"	20	5.5	0	10	6	3000	30		
					16	16	3600	36		
R2IHCFGV25///Coil	1"	25	10,2	0	10	8	3600	36		

: Please select the sealing type required
 Example: R2IHCDGV15///300E: ISO G1/2" FKM
 Coil 230V AC 15VA

Coils

SERIE	Coil P/N	Voltage	Nominal Power			Electrical connection	Connectors
			AC VA Inrush	AC VA Holding	DC Watt		
Series 3000 Width 30mm	3001	24V DC	-	-	10	DIN 43650A	On Demand
	3C01	24VDC	-	-	12		
	300B	24V AC	15	12	-		
	300D	110V AC	15	12	-		
	300E	230V AC	15	12	-		
Series 3600 Width 36mm	3601	24V DC	-	-	24	DIN 43650A	On Demand
	360B	24V AC	30	24	-		
	360D	110V AC	30	24	-		
	360E	230V AC	30	24	-		



DESCRIPTION

- Solenoid valve 2 ways, combined acting type.
- Stainless Steel body AISI304.

CONSTRUCTION

- Body: Stainless Steel AISI 304
- Armature tube: Stainless steel Aisi 303
- Plunger and core: Stainless steel 430Fr
- Springs: Stainless steel Aisi 302
- Seal material: FKM

FEATURES

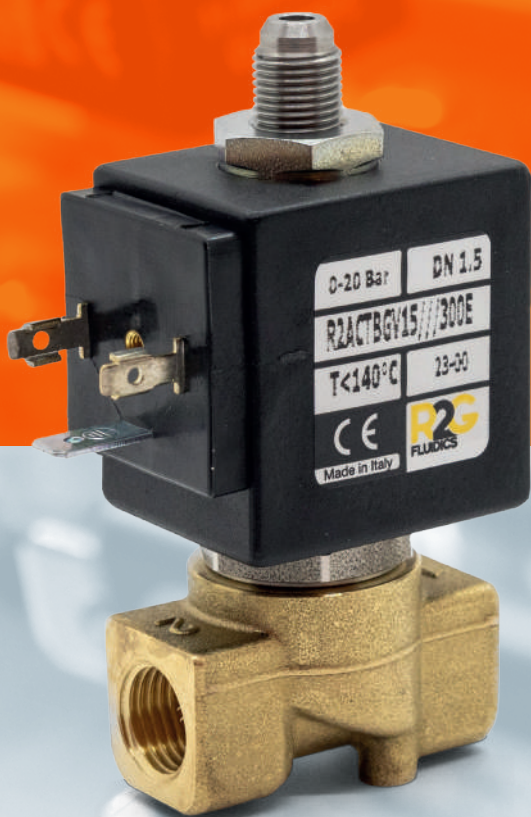
- Maximum allowable pressure: 26bar
- Maximum fluid viscosity: 25cSt (mm2/s)
- Ambient temperature:
 - with class F coil -10°C +55°C
 - with class H coil -10°C +80°C
- Above 80°C please consult our tech department for the application fine tuning
- Preferred mounting position with vertical coil above

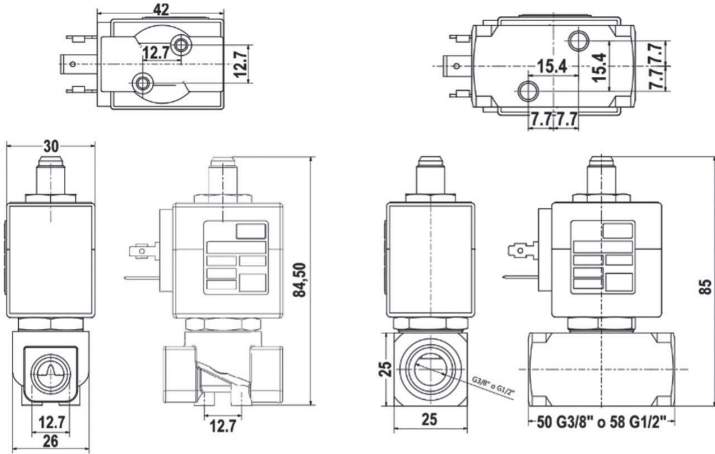
OPTIONS

SPARE PARTS

1. Coil fixing nut
2. Coil
3. Mobile plunger assembly
4. Armature tube kit
5. Diaphragm assembly

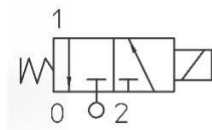
3 Ways Direct Acting





3/2 Serie R2ACT Normally Close

CODE	Connection 6 ISO 228	Orifice mm	Kv m3/h	Differential Pressure (bar)			Coil		Seal	Temp. Range °C
				Min	Max		Series	Width (mm)		
					AC	DC				
R2ACTAG#12/// Coil	1/8"	1.2	0.05	0	25	25	3000	30	NBR=B	-10 +90
R2ACTAG#15/// Coil		1.5	0.07	0	20	20				
R2ACTAG#20/// Coil		2	0.1	0	13	13				
R2ACTAG#25/// Coil		2.5	0.15	0	10	10				
R2ACTAG#30/// Coil		3.0	0.25	0	6.5	6.5				
R2ACTBG#12/// Coil	1/4"	1.2	0.05	0	25	25	3000	30	EPDM=E	-10 +160
R2ACTBG#15/// Coil		1.5	0.07	0	20	20				
R2ACTBG#20/// Coil		2	0.1	0	13	13				
R2ACTBG#25/// Coil		2.5	0.15	0	10	10				
R2ACTBG#30/// Coil		3.0	0.25	0	6.5	6.5				
R2ACTBG#35/// Coil	3/8"	3.5	0.32	0	5	5	3000	30	FPM=V	-10 +160
R2ACTCG#30/// Coil		3	0.25	0	6.5	6.5				
R2ACTCG#35/// Coil	1/2"	3.5	0.32	0	5	5	3000	30	PTFE=P	-10 +180
R2ACTDG#30/// Coil		3	0.25	0	6.5	6.5				
R2ACTDG#35/// Coil	1/2"	3.5	0.32	0	5	5	3000	30	PTFE=P	-10 +180
R2ACTDG#35/// Coil		3.5	0.32	0	5	5				



DESCRIPTION

- Solenoid valve 3 ways, direct acting type.
- Brass body CW617N.
- Switching-On time 18ms.
- Switching-Off time 23ms.

CONSTRUCTION

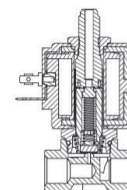
- Body: Brass CW614N
- Armature tube: Stainless steel Aisi 303
- Plunger and core: Stainless steel 430Fr
- Springs: Stainless steel Aisi 302
- Seal material: NBR - FPM - EPDM - PTFE

FEATURES

- Maximum allowable pressure: 45bar*
- Maximum fluid viscosity: 25cSt (mm2/s)
- 3rd way orifice: 2,5mm
- Ambient temperature: with class F coil: -10°C +55°C
- Above 80°C please consult our tech department for the application fine tuning
- Universal mounting position

OPTIONS

- Manual override
- /O: Degreased for Industrial Oxygen use
- /N: Electroless nickel plating
- /R: Stainless steel orifice
- Others on request



SPARE PARTS

1. Coil fixing nut
2. Coil
3. Mobile plunger assembly
4. Armature tube kit

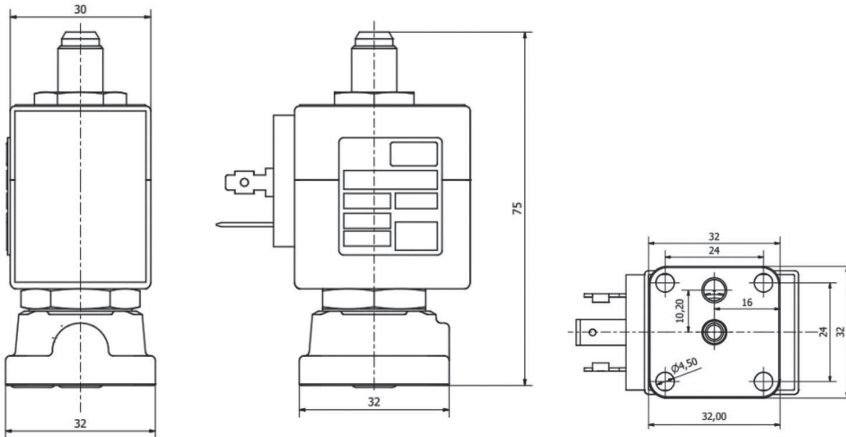
: Please select the sealing type required
Example: R2ACTBG25//300I: ISO G1/4"NBR
Coil 24V DC 10W

REMARK: The maximum allowable pressure PS for steam is 6bar with PTFE seals and 2,5bar with EPDM

Note: For Industrial Oxygen use application use FKM seals and max pressure is limited to 25bar.
Example: R2ACTBG15//300I G1/4" 1,5mm FKM
24V DC 10W

Coils

SERIE	Coil P/N	Voltage	Nominal Power			Electrical connection	Connectors
			AC VA Inrush	AC VA Holding	DC Watt		
Series 3000 Width 30mm	3001	24DC	-	-	10	DIN 43650A	On Demand
	300B	24 AC	15	12	-		
	300D	110 AC	15	12	-		
	300E	230 AC	15	12	-		



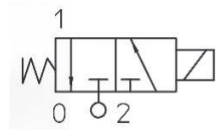
3/2 Serie R2XCT Normally Close

CODE	Connection G ISO 228	Orifice mm	Kv m3/h	Differential Pressure (bar)			Coil		Seal	Temp. Range °C
				Min	Max		Series	Width (mm)		
					AC	DC				
R2XCTXG#12/// Coil	Sub Base	1,2	0,05	0	25	25	3000	30	NBR=B	-10 +90
R2XCTXG#15/// Coil		1,5	0,07	0	20	20			EPDM=E	-10 +160
R2XCTXG#20/// Coil		2	0,1	0	13	13			FPM=V	-10 +160
R2XCTXG#25/// Coil		2,5	0,15	0	10	10				

: Please select the sealing type required
Example: R2XCTXGB25///3001: ISO G¼" NBR
Coil 24V DC 10W

REMARK: The maximum allowable pressure PS for steam is 6bar with PTFE seals and 2,5bar with EPDM

Note: For Industrial Oxygen use application use FKM seals and max pressure is limited to 25bar.
Example: R2XCTXGV15/0/3001 G1/4" 1,5mm FKM
24V DC 10W



DESCRIPTION

- Solenoid valve 3 ways, direct acting type.
- Brass body CW617N.
- Switching-On time 18ms.
- Switching-Off time 23ms.

CONSTRUCTION

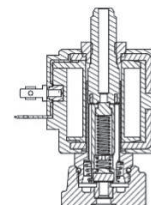
- Body: Brass CW614N
- Armature tube: Stainless steel Aisi 303
- Plunger and core: Stainless steel 430Fr
- Springs: Stainless steel Aisi 302
- Seal material: NBR - FPM - EPDM - PTFE

FEATURES

- Maximum allowable pressure: 45bar*
- Maximum fluid viscosity: 25cSt (mm2/s)
- Ambient temperature:
with class F coil: -10°C +55°C
with class H coil: -10°C +80°C
- Above 80°C please consult our tech department for the application fine tuning
- Universal mounting position

OPTIONS

- Manual override
- Degreased for Industrial Oxygen use
- Electroless nickel plating
- Others on request

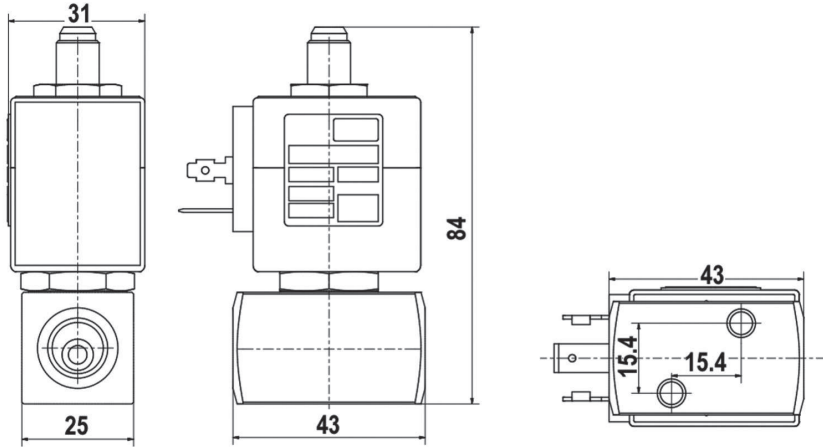


SPARE PARTS

1. Coil fixing nut
2. Coil
3. Mobile plunger assembly
4. Armature tube kit

Coils

SERIE	Coil P/N	Voltage	Nominal Power			Electrical connection	Connectors
			AC VA Inrush	AC VA Holding	DC Watt		
Series 3000 Width 30mm	3001	24DC	-	-	10	DIN 43650A	On Demand
	300B	24 AC	15	12	-		
	300E	230 AC	15	12	-		



3/2 Serie R2ICT Normally Closed

CODE	Connection G ISO 228	Orifice mm	Kv m3/h	Differential Pressure (bar)		Coil		Seal	Temp. Range °C		
				Min	Max	Series	Width (mm)				
				AC	DC						
R2ICTBG#15/// Coil	1/4"	1.5	0.07	0	20	3000	30	NBR=B	-10 +90		
R2ICTBG#20/// Coil		2	0.1	0	13						
R2ICTBG#25/// Coil		2.5	0.15	0	10						
R2ICTBG#35/// Coil		3.5	0.32	0	5						
R2ICTCG#30/// Coil	3/8"	3	0.25	0	6.5			3000	30	FPM=V	-10 +160
R2ICTCG#35/// Coil		3.5	0.32	0	5						
R2ICTDG#30/// Coil	1/2"	3	0.25	0	6.5			3000	30	PTFE = P	-40 +180
R2ICTDG#35/// Coil		3.5	0.32	0	5						

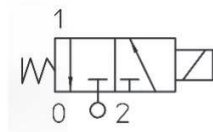
: Please select the sealing type required
Example: R2ICTBG15//3001: ISO G1/4"NBR
Coil 24V DC 10W

REMARK: The maximum allowable pressure PS for steam is 6bar with PTFE seals and 2,5bar with EPDM

Note: For Industrial Oxygen use application use FKM seals and max pressure is limited to 25bar.
Example: R2ICTBGV15//3001 G1/4" 1,5mm FKM
24V DC 10W

Coils

SERIE	Product Serie	Voltage	Nominal Power			Electrical connection	Connectors
			AC VA Inrush	AC VA Holding	DC Watt		
Series 3000 Width 30mm	3001	24DC	-	-	10	DIN 43650A	On Demand
	300B	24 AC	15	12	-		
	300E	230 AC	15	12	-		



DESCRIPTION

- Solenoid valve 3 ways, direct acting type.
- Stainless Steel AISI 303.
- Switching-On time 18ms.
- Switching-Off time 23ms.

CONSTRUCTION

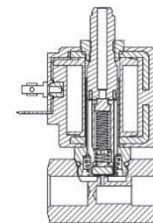
- Body: Stainless Steel AISI 303
- Armature tube: Stainless steel Aisi 303
- Plunger and core: Stainless steel 430F8
- Springs: Stainless steel Aisi 302
- Seal material: NBR - FPM - EPDM - PTFE

FEATURES

- Maximum allowable pressure: 45bar*
- Maximum fluid viscosity: 27cSt (mm2/s)
- Ambient temperature: with class F coil: -10°C +55°C with class H coil -10°C +80°C
- Above 80°C please consult our tech department for the application fine tuning
- Universal mounting position

OPTIONS

- Manual override
- Degreased for Industrial Oxygen use
- Others on request

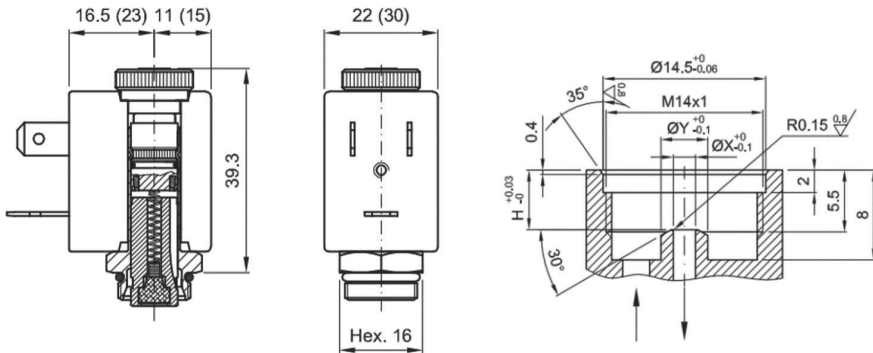


SPARE PARTS

1. Coil fixing nut
2. Coil
3. Mobile plunger assembly
4. Armature tube kit

Direct Acting Pilots





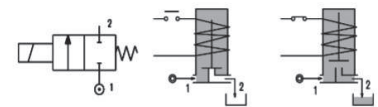
Serie R2KT Armature tube 10mm Normally Close

CODE	ØA mm	ØB mm	L mm	Differential Pressure (bar)			Coil		Seal	Temp. Range °C
				Min	Max AC DC		Series	Width (mm)		
R2KTCA-#AA// Coil	1.2		5	0	25	25	2800	22	NBR=B	-10 +90
R2KTCA-#AA// Coil	1.5		5.1	0	16	16				
R2KTCA-#AA// Coil	2.0		5.2	0	12	10				
R2KTCA-#AA// Coil	2.5		5.4	0	8	6				
R2KTCA-#AA// Coil	3.0		5.5	0	5	3				
R2KTCA-#AA// Coil	4.0		5.6	0	4	2				
R2KTCA-#AA// Coil	2.5		5.4	0	16	8	3A00	30	FPM=V	-10 +160
R2KTCA-#AA// Coil	3.0		5.5	0	8	5				
R2KTCA-#AA// Coil	4.0		5.6	0	5	3				

: Please select the sealing type required
 Example: R2KTCA-BAA//2801: 2/2 NC 10mm tube Stainless Steel, NBR, M14x1 connection
 Coil 24V DC 7W 22mm

Coils

SERIE	Product Serie	Voltage	Nominal Power			Electrical connection	Connectors
			AC VA Inrush	AC VA Holding	DC Watt		
Series 2800 Width 22mm	2801	24 DC	-	-	7	Industrial Standard 22 mm	On Demand
	280B	24 AC	11,5	9	-		
	280E	230 AC	11,5	9	-		
Series 3A00 Width 30mm	3A01	24 DC	-	-	8	DIN 43650A	On Demand
	3A0B	24 AC	11	8,5	-		
	3A0E	230 AC	11	8,5	-		



DESCRIPTION

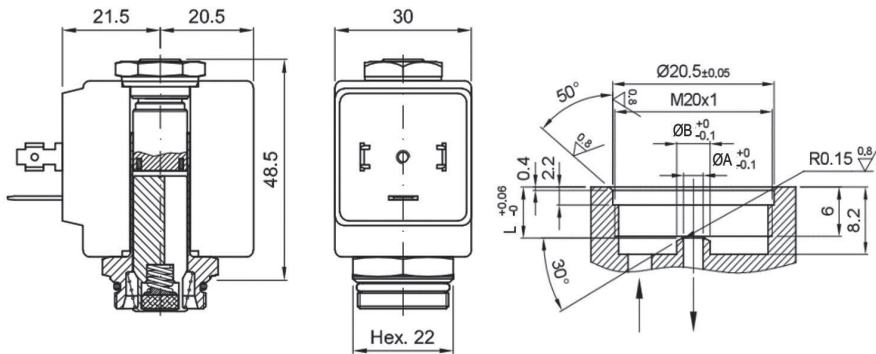
- Solenoid pilot 2 ways, direct acting type.
- Switching-On time 15ms.
- Switching-Off time 20ms.

CONSTRUCTION

- Armature tube: Stainless Steel AISI 303
- Plunger and core: Stainless steel - 430 Fr
- Springs: Stainless steel - Aisi 302
- Seal material: NBR - FPM - EPDM

FEATURES

- Maximum allowable pressure: 100bar*
- Maximum fluid viscosity: 27cSt (mm²/s)
- Ambient temperature:
 Class F coil -10°C +55°C
 Class H coil -10°C +80°C
- Above 80°C please consult our tech department for the application fine tuning
- Universal mounting



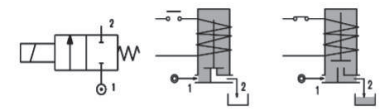
Serie R2KT Armature tube 13mm Normally Close

CODE	ØA mm	ØB mm	L mm	Differential Pressure (bar)			Coil		Seal	Temp. Range °C
				Min	AC	DC	Series	Width (mm)		
R2KTCC-#CA/// Coil	0.8	4.2	6.2	0	100	100	3000	30	NBR=B	-10 +90
R2KTCC-#CA/// Coil	1.5	4.2	6.2	0	30	25			EPDM=E	-10 +160
R2KTCC-#CA/// Coil	2.0	4.2	6.2	0	22	20			FPM=V	-10 +160
R2KTCC-#CA/// Coil	2.5	4.2	6.2	0	16	15			FFKM=K	-10 +180
R2KTCC-#CA/// Coil	3.5	6.2	6.2	0	10	8			PTFE=P	-10 +180
R2KTCC-#CA/// Coil	4.5	6.2	6.4	0	6.5	3.5				
R2KTCC-#CA/// Coil	5.2	6.2	6.4	0	4	1.8				

: Please select the sealing type required
 Example: R2KTCC-BCA///3001: 2/2 NC 13mm tube Stainless Steel, NBR, M20x1.5 connection
 Coil 24V DC 10W 30mm

Coils

SERIE	Product Serie	Voltage	Nominal Power			Electrical connection	Connectors
			AC VA Inrush	AC VA Holding	DC Watt		
Series 3000 Width 30mm	3001	24 DC	-	-	10	DIN 43650A	On Demand
	300B	24 AC	15	12	-		
	300E	230 AC	15	12	-		



DESCRIPTION

- Solenoid pilot 2 ways, direct acting type.
- Switching-On time 15ms.
- Switching-Off time 20ms.

CONSTRUCTION

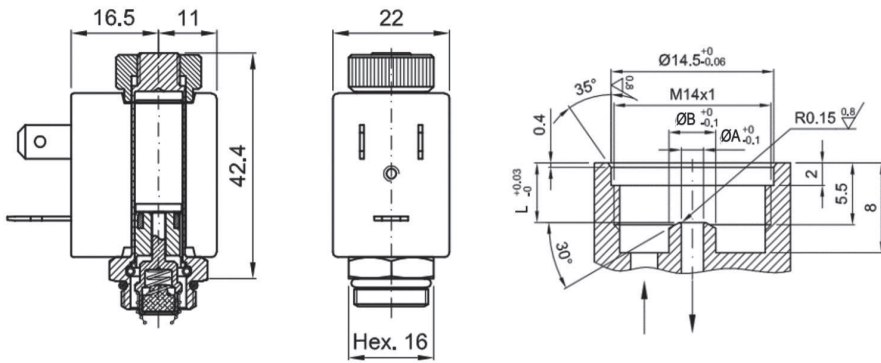
- Armature tube: Stainless Steel AISI 303
- Plunger and core: Stainless steel – 430 Fr
- Springs: Stainless steel – Aisi 302
- Seal material: NBR - FPM - EPDM - PTFE - FFKM

FEATURES

- Maximum allowable pressure: 100bar*
- Maximum fluid viscosity: 27cSt (mm2/s)
- Ambient temperature:
 Class F coil -10°C +55°C
 Class H coil -10°C +80°C
- Above 80°C please consult our tech department for the application fine tuning
- Universal mounting

OPTIONS

- /B: Back pressure resistance (for pressure details please ask our technical department)



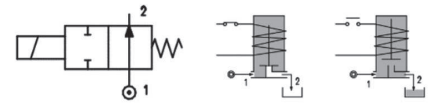
Serie R2KT Armature tube 10mm Normally Open

CODE	ØA mm	ØB mm	L mm	Differential Pressure (bar)			Coil		Seal	Temp. Range °C
				Min	AC	DC	Series	Width (mm)		
R2KTAA-#AA// Coil	1.2		5	0	18	18	2800	22	NBR=B	-10 +90
R2KTAA-#AA// Coil	1.5		5.1	0	14	14			EPDM=E	-10 +160
R2KTAA-#AA// Coil	2.0		5.2	0	8	8			FPM=V	-10 +160
R2KTAA-#AA// Coil	2.5		5.4	0	4	4				
R2KTAA-#AA// Coil	3.0		5.5	0	2.5	2.5				

: Please select the sealing type required
 Example: R2KTAA-BAA//2801: 2/2 NO 10mm tube Stainless Steel, NBR, M14x1 connection
 Coil 24V DC 7W 22mm

Coils

SERIE	Product Serie	Voltage	Nominal Power			Electrical connection	Connectors
			AC VA Inrush	AC VA Holding	DC Watt		
Series 2800 Width 22mm	2801	24 DC	-	-	7	Industrial Standard 22 mm	On Demand
	280B	24 AC	11,5	9	-		
	280E	230 AC	11,5	9	-		



DESCRIPTION

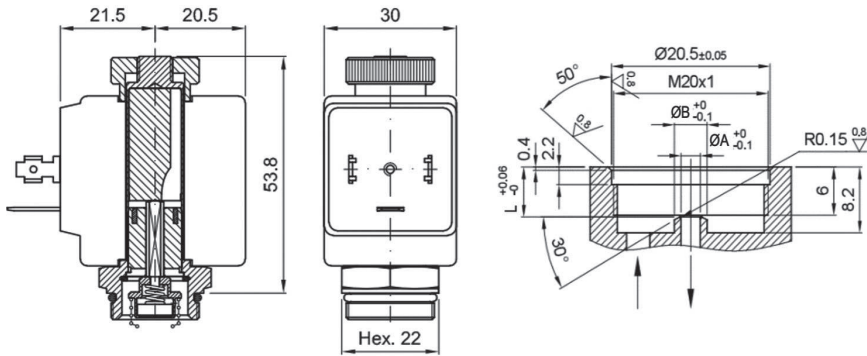
- Solenoid pilot 2 ways, direct acting type.
- Switching-On time 25ms.
- Switching-Off time 10ms.

CONSTRUCTION

- Armature tube: Brass CW614N
- Plunger and core: Stainless steel – 430 Fr
- Springs: Stainless steel – Aisi 302
- Seal material: NBR - FPM - EPDM

FEATURES

- Maximum allowable pressure: 45bar*
- Maximum fluid viscosity: 27cSt (mm2/s)
- Ambient temperature:
 Class F coil -10°C +55°C
 Class H coil -10°C +80°C
- Above 80°C please consult our tech department for the application fine tuning
- Universal mounting



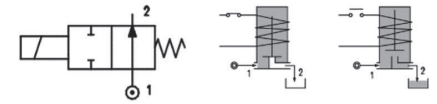
Serie R2KT Armature tube 13mm Normally Open

CODE	øA mm	øB mm	L mm	Differential Pressure (bar)			Coil		Seal	Temp. Range °C
				Min	Max		Series	Width (mm)		
					AC	DC				
R2KTAC-#CA/// Coil	1.5	4.2	6.2	0	18	18	3000	30	NBR=B EPDM=E FPM=V	-10 +90 -10 +160 -10 +160
R2KTAC-#CA/// Coil	2.0	4.2	6.2	0	11	11				
R2KTAC-#CA/// Coil	2.5	4.2	6.2	0	7	7				
R2KTAC-#CA/G03/ Coil	3.5	6.2	6.2	0	6.5	6.5				
R2KTAC-#CA/G03/ Coil	4.5	6.2	6.4	0	4	4				

: Please select the sealing type required
 Example: R2KTAC-BCA///3001: 2/2 NO 13mm tube Stainless Steel, NBR, M20x1.5 connection
 Coil 24V DC 10W 30mm

Coils

SERIE	Product Serie	Voltage	Nominal Power			Electrical connection	Connectors
			AC VA Inrush	AC VA Holding	DC Watt		
Series 3000 Width 30mm	3001	24 DC	-	-	10	DIN 43650A	On Demand
	300B	24 AC	15	12	-		
	300E	230 AC	15	12	-		



DESCRIPTION

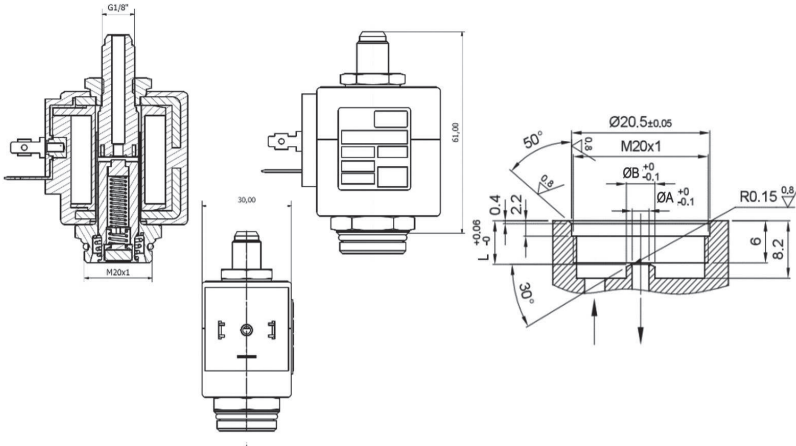
- Solenoid pilot 2 ways, direct acting type.
- Switching-On time 25ms.
- Switching-Off time 10ms.

CONSTRUCTION

- Armature tube: Stainless Steel AISI 303
- Plunger and core: Stainless steel - 430 Fr
- Springs: Stainless steel - Aisi 302
- Seal material: NBR - FPM - EPDM

FEATURES

- Maximum allowable pressure: 100bar*
- Maximum fluid viscosity: 27cSt (mm2/s)
- Ambient temperature:
 Class F coil -10°C +55°C
 Class H coil -10°C +80°C
- Above 80°C please consult our tech department for the application fine tuning
- Universal mounting



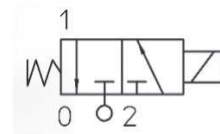
Serie R2KT Armature tube 13mm Normally Close

CODE	ØA mm	ØB mm	L mm	Differential Pressure (bar)			Coil		Seal	Temp. Range °C
				Min	AC	DC	Series	Width (mm)		
R2KTEC-#CA/// Bob	1.2	4.2	6.2	0	25	25	3000	30	NBR=B	-10 +90
R2KTEC-#CA/// Bob	1.5	4.2	6.2	0	20	20				
R2KTEC-#CA/// Bob	2.0	4.2	6.2	0	13	13				
R2KTEC-#CA/// Bob	2.5	4.2	6.2	0	10	10				
R2KTEC-#CA/// Bob	3.0	4.2	6.2	0	6.5	6.5				
R2KTEC-#CA/// Bob	3.5	6.2	6.2	0	5	5				
R2KTEC-#CA/// Bob	1.2	4.2	6.2	0	25	25				
									PTFE=P	-10 +180

: Please select the sealing type required
 Example: R2KTEC-BCA///3001: 2/2 NC 13mm tube Stainless Steel, NBR, M20x1.5 connection
 Coil 24V DC 10W 30mm

Coils

SERIE	Product Serie	Voltage	Nominal Power			Electrical connection	Connectors
			AC VA Inrush	AC VA Holding	DC Watt		
Series 3000 Width 30mm	3001	24 DC	-	-	10	DIN 43650A	On Demand
	300B	24 AC	15	12	-		
	300E	230 AC	15	12	-		



DESCRIPTION

- Solenoid pilot 3 ways, direct acting type.
- Exhasut orifice 3rd way: 2,4mm
- Switching-On time 15ms.
- Switching-Off time 20ms.

CONSTRUCTION

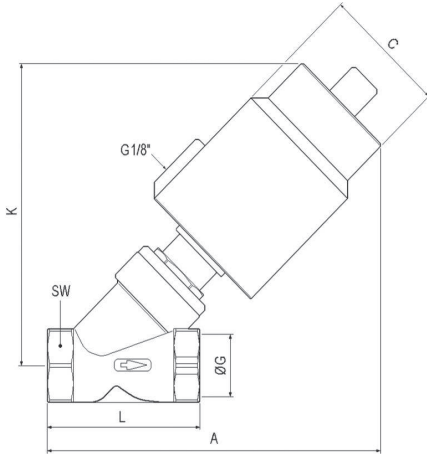
- Armature tube: Stainless Steel AISI 303
- Plunger and core: Stainless steel - 430 Fr
- Springs: Stainless steel - Aisi 302
- Seals material: NBR - FPM - EPDM - PTFE/FKM(*)
- (*) For PTFE main seal version the 3 rd way seal is with FKM

FEATURES

- Maximum allowable pressure: 45bar*
- Maximum fluid viscosity: 27cSt (mm2/s)
- Ambient temperature:
 Class F coil -10°C +55°C
 Class H coil -10°C +80°C
- Above 80°C please consult our tech department for the application fine tuning
- Universal mounting

2 Ways Angle Seat Valves





Mis. Size	Att. Act.	Dimensioni		mm.			Peso
G	DN	C	A	K	L	SW	Kg.
1/2"	40	50.5	124	112	68	27	0.844
3/4"	50	60.0	140	132	75	32	1.130
1"	50	60.0	150	136	90	40	1.380
1"	63	75.0	172	162	90	40	2.130
1-1/4"	63	75.0	190	174	116	50	2.740
1-1/2"	63	75.0	190	175	116	56	2.870
1-1/2"	80	106	235	223	116	56	4.070
2"	80	106	250	232	138	69	6.030



2/2 Serie R2SI Air Actuated Angle Seat Valve

CODE	Connection G ISO 228	Orifice mm	Kv m³/h	Flow under the seat		Flow above the seat		Actuator dimension Hm	Seal	Fluid Temp. Range °C
				Control Pressure	Working Pressure	Control Pressure	Working Pressure			
				Min bar	Max Bar	Min bar	Max Bar			
R2SICDGP13///40	1/2	13	4.7	5	5	5	16	DN 40	PTFE	-10 +180
R2SICEGP18///50	3/4	18	8.6	5	9	5	16	DN 50		
R2SICFGP24///50	1	24	18	5	6	5	16	DN 50		
R2SICFGP24///63	1	24	18	5	11	5	16	DN 63		
R2SICGGP31///63	1 1/4	31	23	5	6	5	16	DN 63		
R2SICHGP35///63	1 1/2	35	33	5	5	5	16	DN 63		
R2SICHGP35///80	1 1/2	35	33	5	8	5	16	DN 80		
R2SICIGP45///80	2	45	53	-	-	5	16	DN 80		

Example: R2SICDGP13///40: ASV G1/2" NC Under Seat Valve DN13mm Actuator DN40

Note on compatibility: Valve is suitable for fluids compatibility according to the parts in contact. User is responsible for the compatibility check according to the working conditions.

DESCRIPTION

- Angle Seat Air Actuated Valve 2 ways Normally Closed.
- Stainless Steel body CF8M (Aisi 316).

CONSTRUCTION

- Body: Stainless Steel CF8M (Aisi 316)
- Piston Housing: Stainless Steel CF8 (Aisi 304)
- Stem: Stainless Steel Aisi 316
- Seat Sealing Disk: PTFE
- Stem Seal: PTFE Chevron

FEATURES

- Flow direction: Under the Seat
- Function: 2/2 Normally Closed
- Maximum fluid viscosity: 600 cSt (mm²/s)
- Ambient temperature: -10°C +60°C
- Pilot fluid: Dry or Lubricated air
- Pilot connection: G 1/8"
- Standard Accessory: Visual Position Indicator
- Universal mounting position

OPTIONS

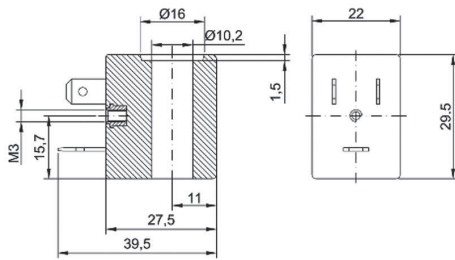
- 3/2 pilot valve on request
- Proportional Flow Configuration
- Others on request



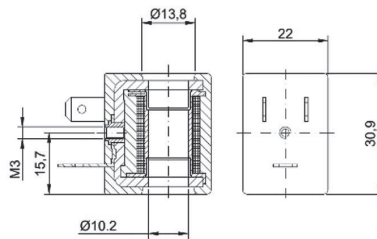
Accessories



Serie 2800



Serie 2200


Serie 2800/2200 – 22mm coil – 10mm Armature Tube

CODE		Voltage - Frequency (V) - (Hz)	Power		Voltage Tolerance %	Service ED %	Note
Class F	Class H		AC (VA)	DC (W)			
280A (*)	282A (*)	12V 50/60Hz	11,5		+15% -10%	100%	Standard Assembly
280B	282B (*)	24V 50/60Hz					
280C (*)	282C (*)	48V 50/60Hz					
280D	282D (*)	110V 50/60Hz					
280E	282E (*)	220/230V 50/60Hz					
2800 (*)	2820 (*)	12V DC	7		+/-10%	100%	
2801	2821 (*)	24V DC					
220A (*)	222A (*)	12V 50/60Hz					
220B	222B (*)	24V 50/60Hz	8		+15% -10%	100%	Standard and Upside-Down Assembly
220C (*)	222C (*)	48V 50/60Hz					
220D (*)	222D (*)	110V 50/60Hz					
220E	222E (*)	220/230V 50/60Hz					
2200 (*)	2220 (*)	12V DC					
2201	2221 (*)	24V DC	6.5		+/-10%	100%	

(*) Available on request

DESCRIPTION

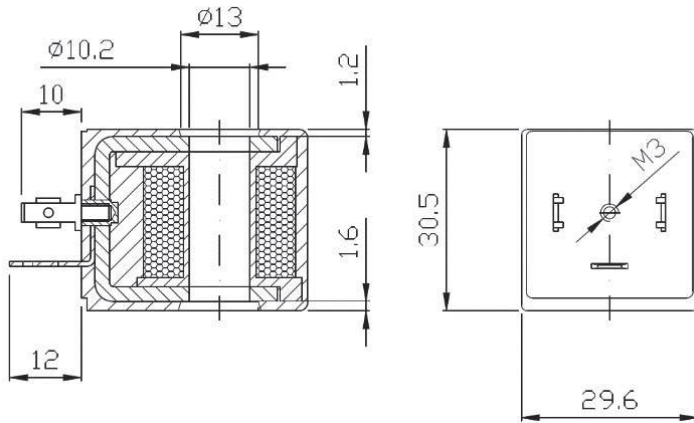
- Encapsulated coil
- Electrical connection according to DIN 43650 B.

CONSTRUCTION

- Encapsulation:
Class F: Fiber-Glass reinforced Nylon
Class H: Fiber-Glass reinforced Polyester
- Magnetic circuit: Zinc-plated steel
- Windings: Class H insulated copper wires
- Ambient Temperature:
Class F: -10°C +55°C
Class H: -10°C +80°C

OPTIONS

- Special powers on request
- Special voltages on request



Serie 3A00 – 30mm Coil – 10mm Armature Tube

CODE		Voltage - Frequency (V) - (Hz)	Power		Voltage Tolerances %	Service ED %	Note
Class F	Class H		AC (VA)	DC (W)			
3A0A (*)	3A2A (*)	12V 50/60Hz	11		+15% -10%	100%	Standard assembly
3A0B	3A2B (*)	24V 50/60Hz					
3A0C (*)	3A2C (*)	48V 50/60Hz					
3A0D (*)	3A2D (*)	110V 50/60Hz					
3A0E	3A2E (*)	220/230V 50/60Hz					
3A00 (*)	3A20 (*)	12V DC	8	+/-10%	100%		
3A01	3A21 (*)	24V DC					

(*) Available on request

DESCRIPTION

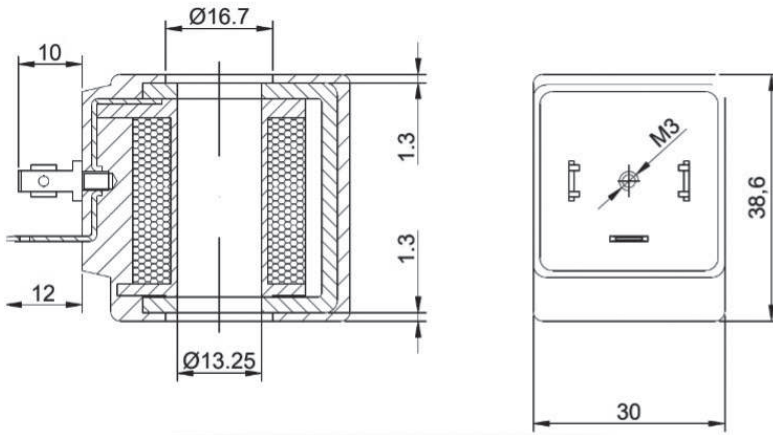
- Encapsulated coil
- Electrical connection according to DIN 43650 A (EN 175301-803 ISO 4400).

CONSTRUCTION

- Encapsulation:
Class F: Fiber-Glass reinforced Nylon
Class H: Fiber-Glass reinforced Polyester
- Magnetic circuit: Zinc-plated steel
- Windings: Class H insulated copper wires
- Ambient Temperature:
Class F: -10°C +55°C
Class H: -10°C +80°C

OPTIONS

- Special powers on request
- Special voltages on request



Serie 3000 – 30mm Coil – 13mm Armature Tube

CODE		Voltage - Frequency (V) - (Hz)	Power		Voltage Tolerances %	Service ED %	Note
Class F	Class H		AC (VA)	DC (W)			
300A (*)	302A (*)	12V 50/60Hz	15		+15% -10%	100%	Standard assembly
300B	302B (*)	24V 50/60Hz					
300C (*)	302C (*)	48V 50/60Hz					
300D	302D (*)	110V 50/60Hz					
300E	302E (*)	220/230V 50/60Hz					
3000	3020 (*)	12V DC	10		+/-10%	100%	
3001	3021 (*)	24V DC					

(*) Available on request

DESCRIPTION

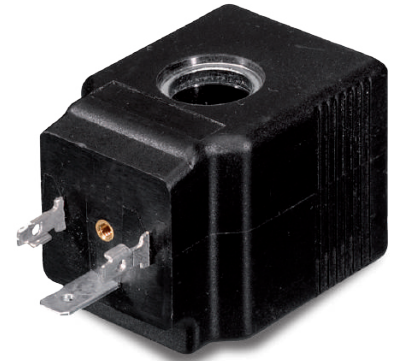
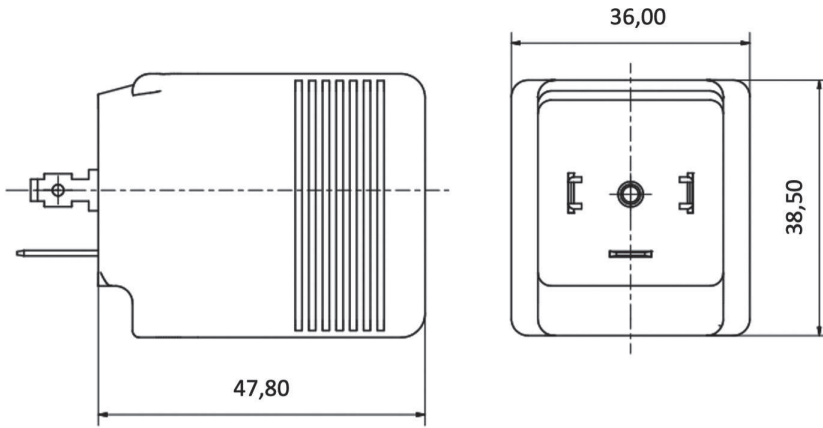
- Encapsulated coil
- Electrical connection according to DIN 43650 A (EN 175301-803 ISO 4400).

CONSTRUCTION

- Encapsulation:
Class F: Fiber-Glass reinforced Nylon
Class H: Fiber-Glass reinforced Polyester
- Magnetic circuit: Zinc-plated steel
- Windings: Class H insulated copper wires
- Ambient Temperature:
Class F: -10°C +55°C
Class H: -10°C +80°C

OPTIONS

- Special powers on request
- Special voltages on request



Serie 3600 – 36mm Coil – 13mm Armature Tube

CODE		Voltage - Frequency (V) - (Hz)	Power		Voltage Tolerances %	Service ED %	Note
Class F	Class H		AC (VA)	DC (W)			
360A (*)	362A (*)	12V 50/60Hz	30		+15% -10%	100%	Standard assembly
360B	362B (*)	24V 50/60Hz					
360C (*)	362C (*)	48V 50/60Hz					
360D	362D (*)	110V 50/60Hz					
360E	362E (*)	220/230V 50/60Hz					
3600 (*)	3620 (*)	12V DC	24	+/-10%	100%		
3601	3621 (*)	24V DC					

(*) Available on request

DESCRIPTION

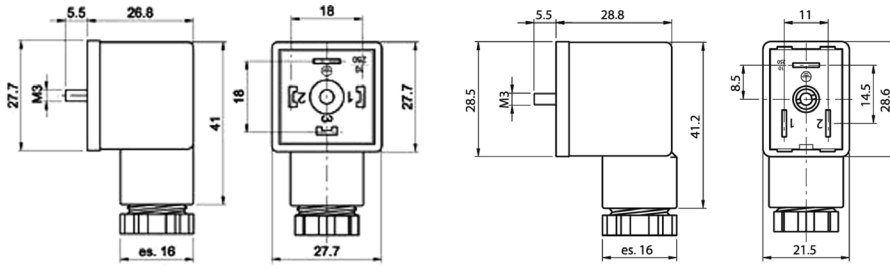
- Encapsulated coil
- Electrical connection according to DIN 43650 A (EN 175301-803 ISO 4400).

CONSTRUCTION

- Encapsulation:
Class F: Fiber-Glass reinforced Nylon
Class H: Fiber-Glass reinforced Polyester
- Magnetic circuit: Zinc-plated steel
- Windings: Class H insulated copper wires
- Ambient Temperature:
Class F: -10°C +55°C
Class H: -10°C +80°C

OPTIONS

- Special powers on request
- Special voltages on request



Serie 413

Serie 412

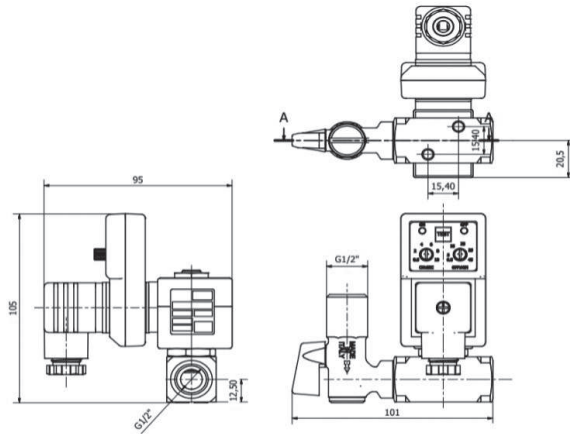


Electrical plug Serie 412 / 413

SERIE	Part Number	Electrical connection	Contact Distance	Cable Gland
Serie 412	412 212 09C	Industrial Standard 22 mm EN 175301-803 (ex DIN 43650) Form B	11 mm	Pg.9
Serie 413	413 012 09C	EN 175301-803 (ex DIN 43650) Form A	18 mm	Pg.9

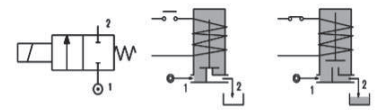
DESCRIPTION

- Electrical plug for Solenoid Valves.
- Protection Class IP65
- Gland Size: PG9
- Electrical Connection: 2 + PE
- Working temperature: -40°C +90°C
- Voltage: AC/DC max. 250V
- Fixing Screw: M3 Central position
- Weight: 0,02Kg



2/2 Serie R2SC Automatic Drain System

CODE	Connections IN-OUT G ISO 228	Orifice mm	Kv m3/h	Differential Pressure (bar)			Coil		Seal	Temp. Range °C
				Min	Max		Series	Width (mm)		
					AC	DC				
R2SCCD6V25/// Coil	G 1/2" - G 1/2"	2.5	0.15	0	16	15	3000	30	FPM=V	-10 +160
R2SCCD6V30/// Coil		3.0	0.25	0	15	10				
R2SCCD6V35/// Coil		3.5	0.32	0	10	8				
R2SCCD6V45/// Coil		4.5	0.41	0	6	4				
R2SCCD6V25/// Coil	G 1/2" - G 1/4"	2.5	0.15	0	35	32	3600	36	FPM=V	-10 +160
R2SCCD6V30/// Coil		3.0	0.25	0	25	24				
R2SCCD6V35/// Coil		3.5	0.32	0	20	19				
R2SCCD6V45/// Coil		4.5	0.41	0	14	13				
R2SCCB6V25/// Coil	G 1/2" - G 1/4"	2.5	0.15	0	16	15	3000	30	FPM=V	-10 +160
R2SCCB6V30/// Coil		3.0	0.25	0	15	10				
R2SCCB6V35/// Coil		3.5	0.32	0	10	8				
R2SCCB6V45/// Coil		4.5	0.41	0	6	4				
R2SCCB6V25/// Coil	G 1/2" - G 1/4"	2.5	0.15	0	35	32	3600	36	FPM=V	-10 +160
R2SCCB6V30/// Coil		3.0	0.25	0	25	24				
R2SCCB6V35/// Coil		3.5	0.32	0	20	19				
R2SCCB6V45/// Coil		4.5	0.41	0	14	13				



DESCRIPTION

- Solenoid valve 2 ways, direct acting type.
- Manual ball valve with filter
- Timer: Ton 0.5-10 sec adjustable
Toff 0.5-45 min adjustable
- Electric plug: R413 012 09C

CONSTRUCTION

- Body: Brass CW614N
- Armature tube: Stainless steel Aisi 303
- Plunger and core: Stainless steel 430Fr
- Springs: Stainless steel Aisi 302
- Seal material: FPM

FEATURES

- Maximum allowable pressure: 45bar*
- Maximum fluid viscosity: 27cSt (mm2/s)
- Ambient temperature:
with class F coil -10°C +55°C
- Timer with LED indication for ON/OFF
- Timer power consumption 4mA
- Protection degree: IP65
- Universal mounting position

OPTIONS

- /W2: Drain system without Timer and electric plug
- Electroless nickel plating
- Others on request

SPARE PARTS

1. Coil fixing nut
2. Coil
3. Mobile plunger assembly
4. Armature tube kit

SERIE	Coil P/N	Voltage	Nominal Power			Electrical connection	Connectors
			AC VA Inrush	AC VA Holding	DC Watt		
Series 3000 Width 30mm	3001	24DC	-	-	10	DIN 43650A	On Demand
	300B	24 AC	15	12	-		
	300E	230 AC	15	12	-		
Series 3600 Width 36mm	3601	24DC	-	-	24	DIN 43650A	On Demand
	360B	24 AC	30	24	-		
	360E	230 AC	30	24	-		

Other voltages on request

The logo consists of the letters 'R2G' in a bold, sans-serif font. The 'R' and 'G' are orange, while the '2' is blue. The letters are slightly overlapping.

FLUIDICS



Dirección: C/ Eugeni Ferrer Dalmau nº34
CP: 08223 – Terrassa (Barcelona)
Teléfono: 684 482 383
Teléfono Móvil: 608 704 910
General: ddf@distribuciondefluidos.eu
Ventas: ventas@distribuciondefluidos.eu
www.distribuciondefluidos.eu